



SB710 Terminus Task Force  
Community Forum  
October 8, 2025 | CSULA

# Welcome & Introductions

- Opening remarks by forum hosts and partners
- Overview of forum objectives and ground rules for discussion

# Presentation - Context/Updates

- Overview of SB 710 and the Task Force mandate
- Recap of the Advancing Alhambra plan and progress to date
- Recap of the City of Los Angeles's plans and progress to date
- Other plans in the area
- Vision for reimagining the 710 terminus without disrupting existing efforts

# SB710 Overview & Task Force Mandate

- **Background**

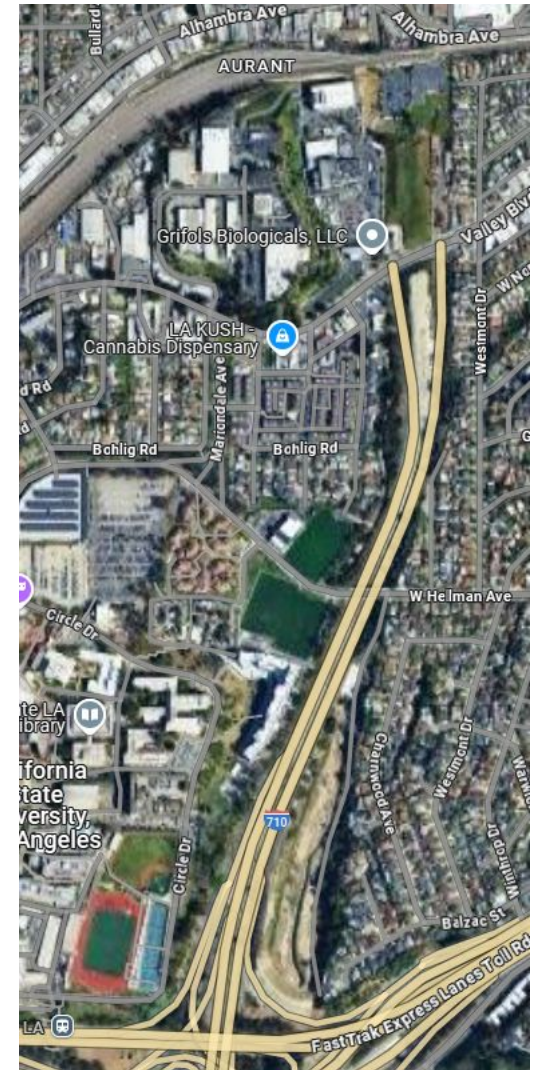
- Decades ago, Caltrans bought land in El Sereno and nearby communities to extend the 710 Freeway to the 210.
- That extension was never built, leaving a “dead end” at the 710 north of the 10 Freeway.
- This created decades of uncertainty, traffic congestion, and disruption for surrounding neighborhoods.

- **What SB 710 Does**

- Establishes a **Terminus Regional Planning Task Force** made up of local cities (Alhambra, Los Angeles), LA County, Cal State LA, Metro, and community/business representatives.
- Task force meets **bimonthly**.
- Produces a **report to the Legislature** on transportation solutions and future land uses.

# SB710 Overview & Task Force Mandate

- **Focus Areas for Planning**
  - Planning replacement of the stub with other transportation infrastructure
  - Exploring land use options: affordable and student housing, workforce development, university expansion, parks/open space



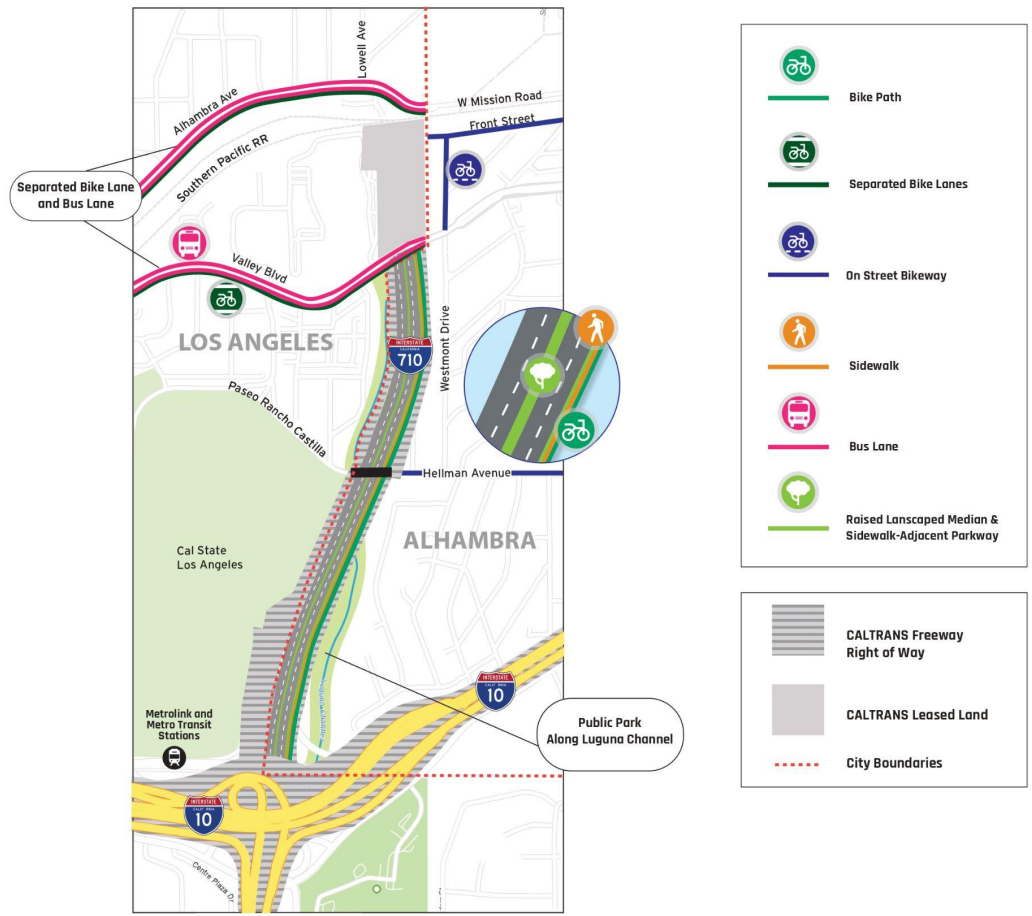
# SB710 Overview

## Why It Matters

- Brings together government, community, and institutions to decide the future of this long-disputed land.
- Ensures planning looks beyond existing infrastructure to include other transportation options, and possibly **housing, green space, or other land uses**.
- Balances local projects (like Alhambra's arterial plan) with a **community vision**



# Existing Plans for the State Route 710 Freeway Stub Area



# Advancing Alhambra Plan

Advancing Alhambra is the City's plan to improve local roads and mobility to create a safer and more active and connected community.

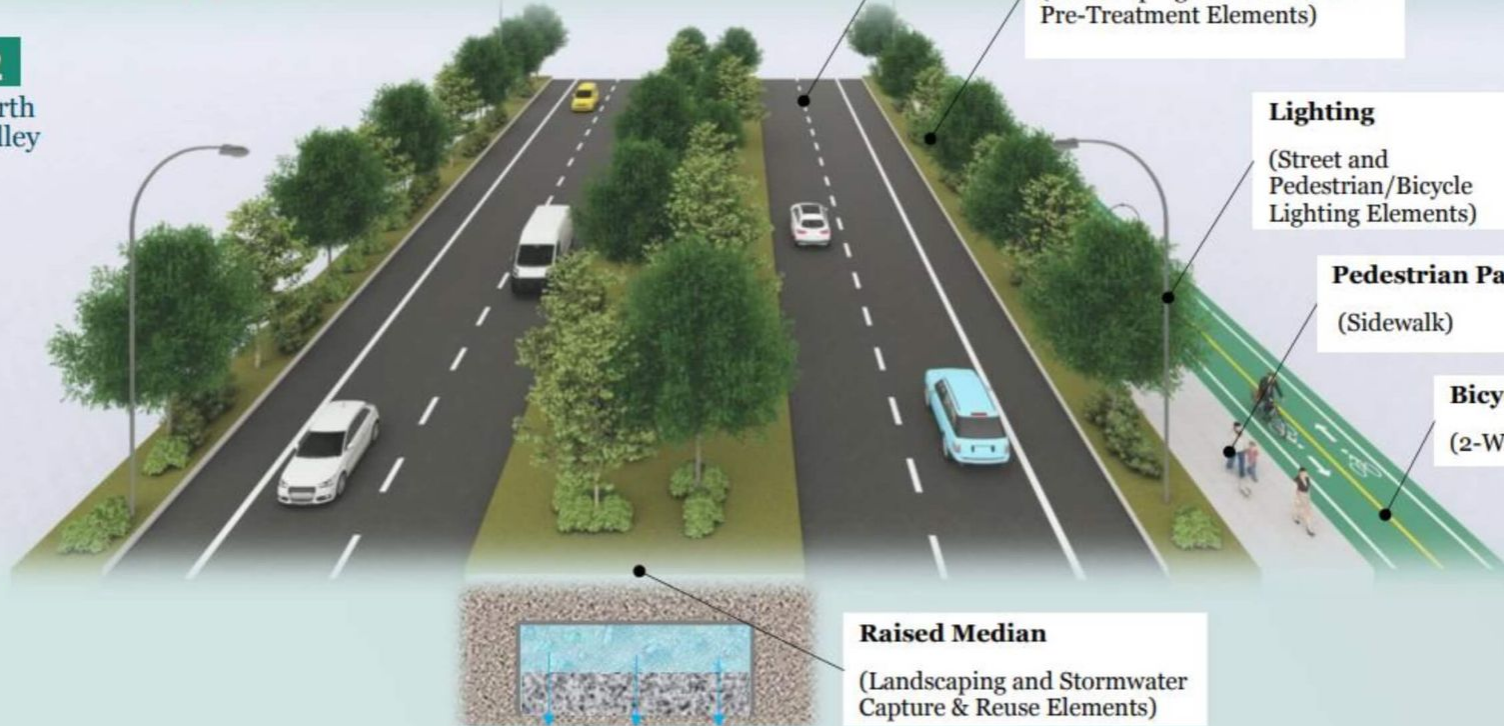
- **710 Arterial Street Concept:** Four-lane divided arterial
- **Street Improvements:** New pavement and curb and gutter
- **Parkway:** Landscaping and stormwater pretreatment elements
- **Lighting:** Street and pedestrian/bicycle lighting elements
- **Pedestrian Pathway:** Sidewalk on the east side
- **Bicycle Path:** Two-way path on the east side
- **Raised Median:** Landscaping and stormwater capture and re-use elements

# 710 Arterial Street Concept

## 4-Lane Divided Arterial with a Separated Bicycle Path

### View 2

Looking north towards Valley Blvd



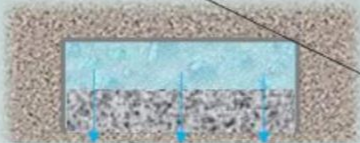
**Street Improvements**  
(New Pavement and Curb and Gutter)

**Parkway**  
(Landscaping and Stormwater Pre-Treatment Elements)

**Lighting**  
(Street and Pedestrian/Bicycle Lighting Elements)

**Pedestrian Pathway**  
(Sidewalk)

**Bicycle Path**  
(2-Way Cycle Track)



**Raised Median**  
(Landscaping and Stormwater Capture & Reuse Elements)

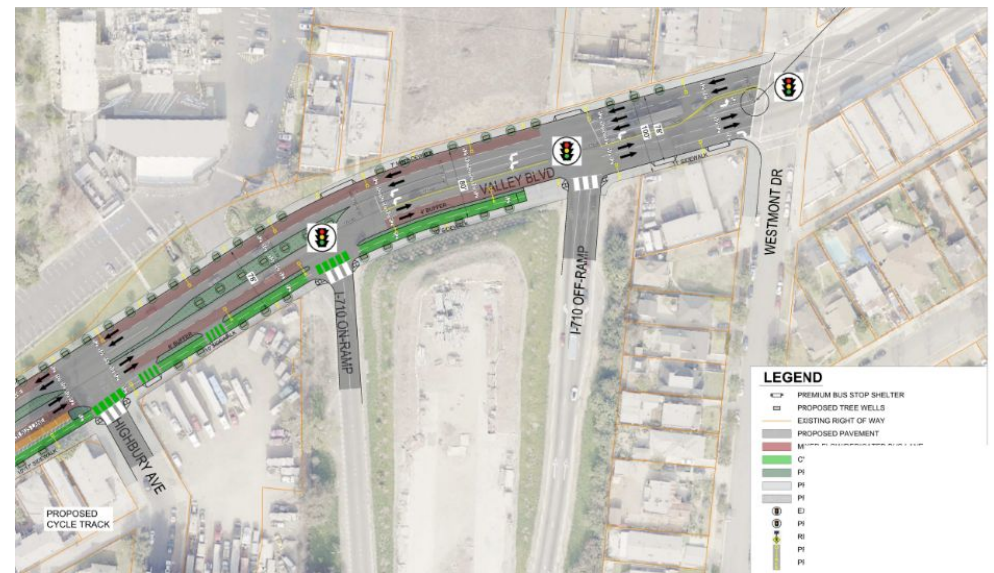
# City of Los Angeles

## Valley Boulevard Plan

- Dedicated bus lanes
- Separated 2-way bike lanes on the south side

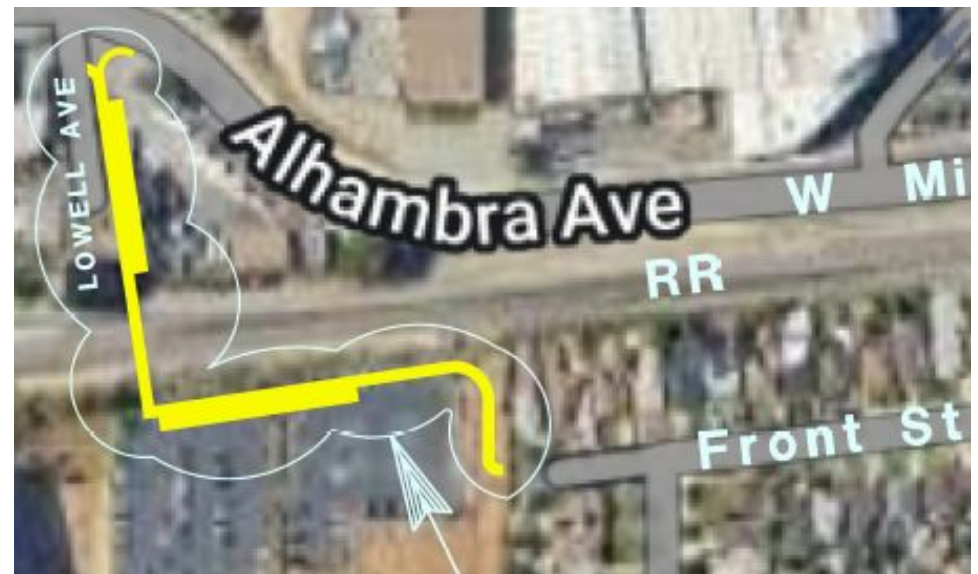
## Alhambra Avenue Plan

- Dedicated bus lanes
- Separated 2-way bike lanes on the south side



# Railroad Crossing Plan

Bike path connecting Lowell Avenue across the railroad tracks, following the periphery of Griffol's parking lot and the recycling center.

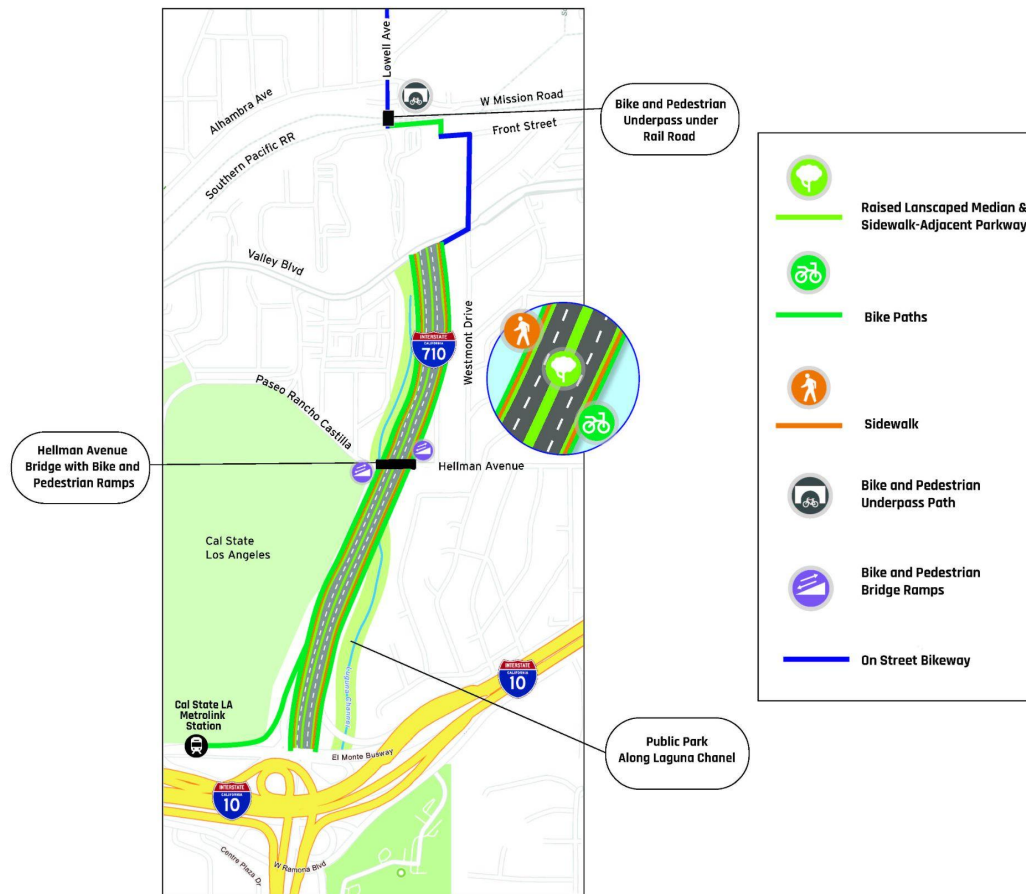


## Other Suggested Improvements

- A linear park along the Luguna Channel
- Ramp(s) connecting Hellman Ave. the new bike paths
- Bike path along the west side of the new arterial street
- Sidewalk along the west side of the new arterial street
- Bike path connecting to the Metro/Metrolink station

# Concepts for the Future

## New Features for NB & SB I-710 Stub Configuration



# Concepts for the Future



# Concepts for the Future



# Microsite Walkthrough

- Demonstration of the online microsite
- How to access documents, maps, images, drone footage, and survey

# Community Feedback Session

- Guided stakeholder discussion on:
  - \* Transportation priorities
  - \* Land use opportunities
  - \* Community benefits and concerns
- Small group or open forum format (depending on attendance)

# Report Back & Key Themes

- Summary of input shared by participants
- Highlight emerging consensus and differing perspectives

## Closing & Next Steps

- How community feedback will be used by the Task Force
- Opportunities for continued engagement
- Thank you and adjourn

Please complete this brief survey  
before heading out!



The survey can also be found at this link:

<https://www.research.net/r/sb710survey>

Thank you!