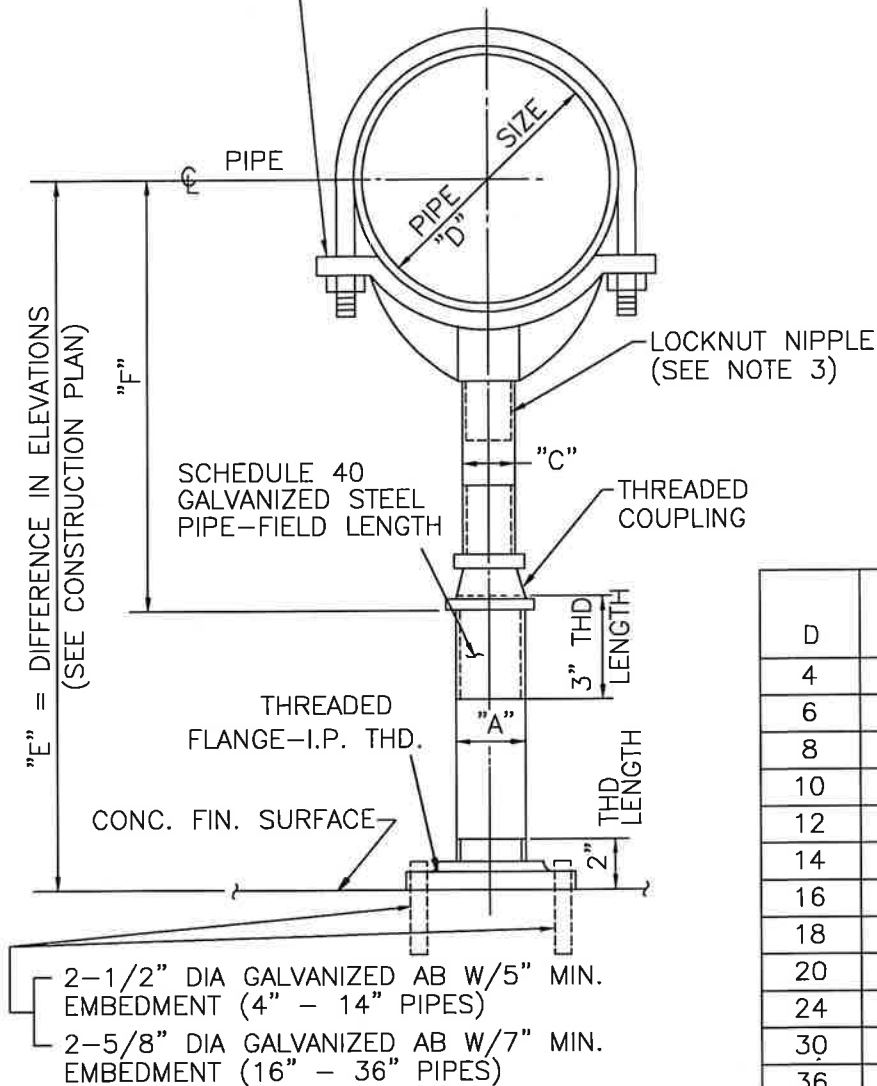


PIPE SADDLE W/ U-BOLT & NUTS
GRINNELL FIG. 259
OR TOLCO FIG. 318



D	A	C	F	
			MIN.	MAX.
4	3	2 1/2	9 1/4	14
6	3	2 1/2	10 1/2	15 1/4
8	3	2 1/2	11 3/4	16 1/2
10	3	2 1/2	13 1/2	18 1/4
12	3	2 1/2	15	19 3/4
14	4	3	16 1/4	20 3/4
16	4	3	17 3/4	22 1/4
18	6	4	19 1/2	24
20	6	4	21	25 1/2
24	6	4	23 3/4	28 1/4
30	6	4	27	31 1/2
36	6	4	30 1/4	34 3/4

NOTES:

1. ALL MATERIAL SHALL BE GALVANIZED STEEL, UNLESS OTHERWISE SPECIFIED.
2. INSTALLED PIPE SUPPORT SHALL PROVIDE VERTICAL ADJUSTMENT OF APPROXIMATELY 4 1/2 INCHES.
3. LOWER END OF NIPPLE SHALL BE STAKED, UPSETTING THE THREADS TO PREVENT SEPARATION OF NIPPLE & COUPLING DURING ADJUSTMENT.

ADJUSTABLE PIPE SUPPORT W/ U-BOLT

CITY OF MONTEREY PARK

PUBLIC WORKS DEPARTMENT - WATER DIVISION

STANDARD NO.

W-271

	BY	DATE
DRAWN	AM	10/02/24
REVISED	DZ	10/02/24
CHANGED	XX	XX/XX/XX

APPROVED
WATER UTILITY MANAGER

[Signature]

DATE

12/10/24

APPROVED
CITY ENGINEER

[Signature]

DATE

12/11/24

SHEET 1 OF 1