

NOTES:

1. POURED IN PLACE FLOORS SHALL BE FORMED. 6" MIN. THICKNESS WITH #3 WIRE TIES 12" O.C. BOTH WAYS. CONCRETE SHALL BE CLASS 560-C-3250 (3250 P.S.I. AT 28 DAYS) FLOOR SHALL BE TROWEL FINISHED WITH PROPER FISHBONE SLOPE TO SUMP HOLE DRAIN.
2. VAULTS GREATER THAN 4' IN DEPTH REQUIRE A FIBER REINFORCED PLASTIC (FRP) LADDER SET PERPENDICULAR TO HINGE.
3. ULTIMATE RIGHT OF WAY SHALL BE DETERMINED BY PUBLIC WORKS.

STANDARD METER VAULT INSTALLATION

CITY OF MONTEREY PARK

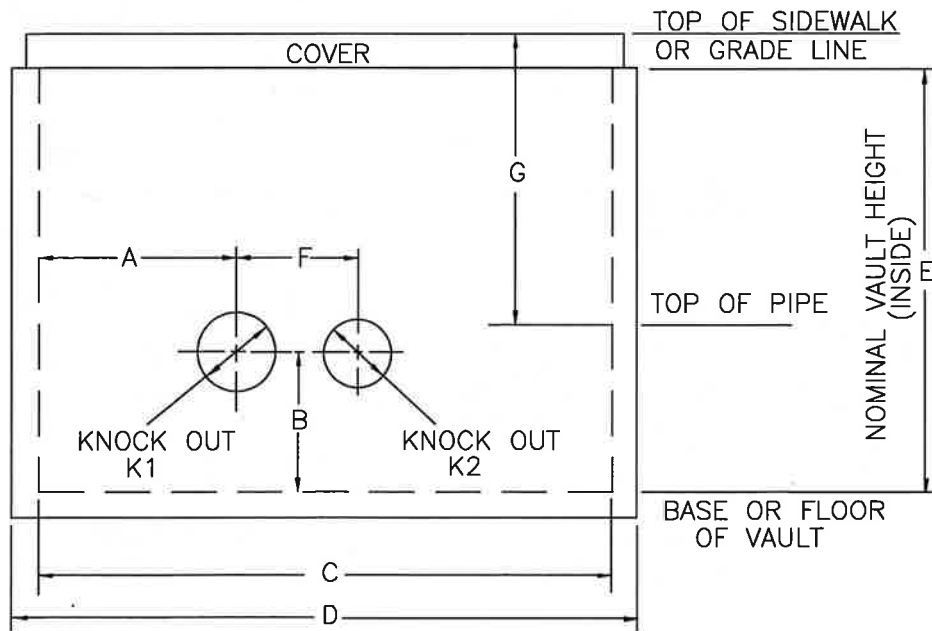
PUBLIC WORKS DEPARTMENT-WATER DIVISION

STANDARD NO.

W-203

DRAWN	BY	DATE	APPROVED	DATE
	AM	10/02/24	WATER UTILITY MANAGER	12/10/24
REVISED	DZ	10/02/24		
CHANGED	XX	XX/XX/XX	APPROVED	DATE
			CITY ENGINEER	12/11/24

SHEET 1 OF 3



INLET END - STANDARD DIMENSIONS

TURBINE/COMPOUND METERS

METER SIZE	K1	K2	A	B	C	D	E	F	G
3"	10"	N/A	19"	16"	57.5"	63.75"	48"	N/A	34"
4"	10"	N/A	19"	16"	57.5"	63.75"	48"	N/A	34"
6"	12"	N/A	19"	16"	57.5"	63.75"	48"	N/A	34"
DUAL 6"	12"	12"	14.5"	14"	57.5"	63.75"	48"	26.5"	38"
8"/10"	SPECIAL DESIGN								

APPROVED VAULT SUPPLIERS:

1. EISEL ENTERPRISES, INC.
2. JENSEN PRECAST
3. J&R CONCRETE PRODUCTS, INC.
4. OLSON PRECAST COMPANY
5. OLDCASTLE PRECAST, INC.

NOTES:

1. WHEN ORDERING VAULTS, INFORM SUPPLIER THAT VAULT WILL BE INSTALLED IN THE CITY OF MONTEREY PARK.
2. HOLES TO BE SEALED W/ NON SHRINK GROUT, LINK SEALS, OR APPROVED EQUAL.

STANDARD METER VAULT INSTALLATION

CITY OF MONTEREY PARK

PUBLIC WORKS DEPARTMENT - WATER DIVISION

STANDARD NO.

W-203

DRAWN	BY AM	DATE 10/02/24
REVISED	DZ	10/02/24
CHANGED	XX	XX/XX/XX

APPROVED
WATER UTILITY MANAGER

[Signature]

DATE

12/10/24

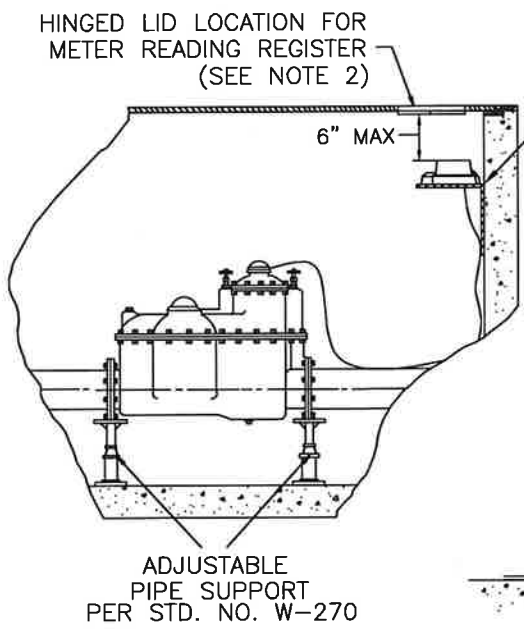
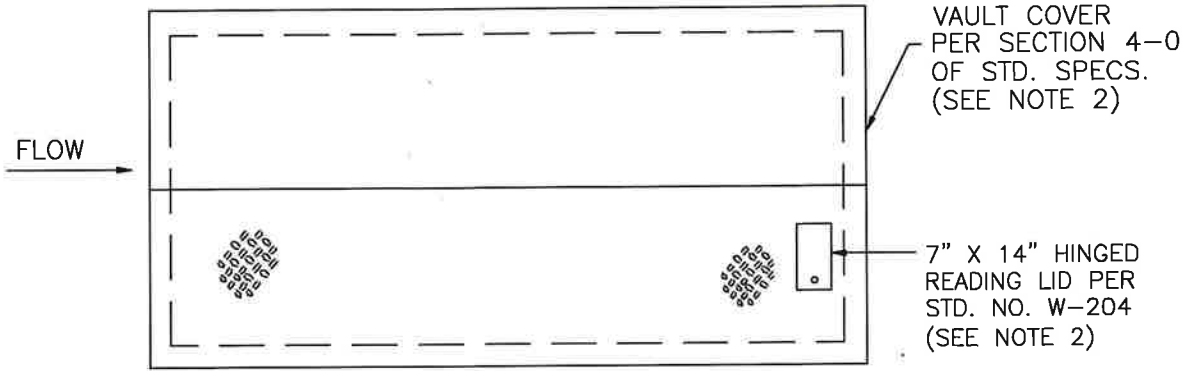
APPROVED
CITY ENGINEER

[Signature]

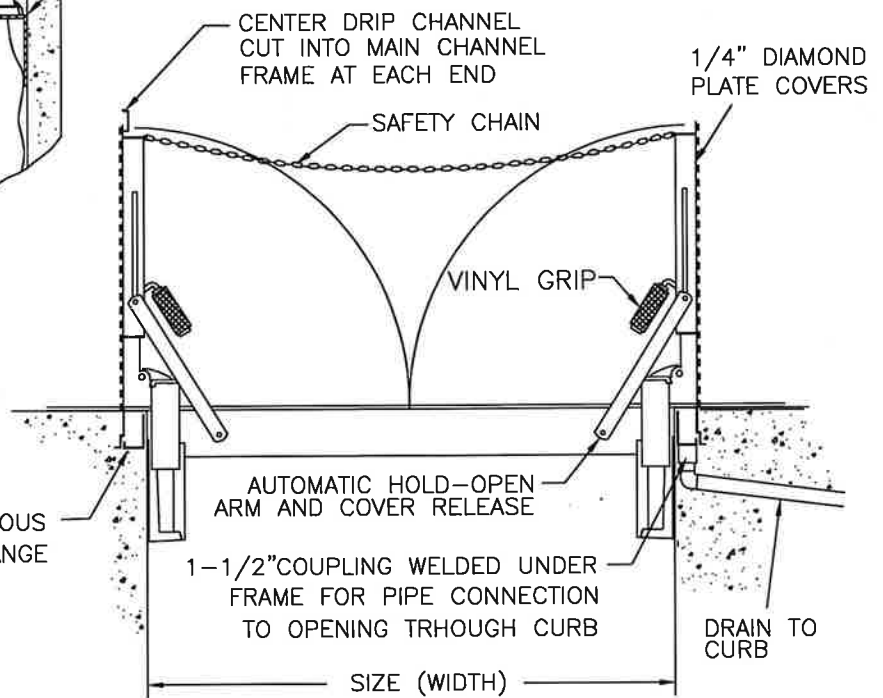
DATE

12/6/24

SHEET 2 OF 3



BOLT STEEL ANGLE SECURELY TO VAULT WALL. SIZE ANGLE TO SUPPORT REMOTE METER READING REGISTER AS REQUIRED. METER SHALL INCLUDE BACKING PLATE AND SHALL BE BOLTED TO ANGLE. (SEE NOTE 3)



NOTES:

1. APPROVED VAULT COVER SUPPLIERS:
2. THE CONTRACTOR SHALL SUBMIT TO THE UTILITY FOR REVIEW AND APPROVAL THE VAULT COVER DETAIL INDICATING THE LOCATION OF THE HINGED LID OPENING PRIOR TO FABRICATION. THE LOCATION OF THE HINGED LID SHALL ALLOW FOR CLEAR ACCESS TO THE METER READING REGISTER.
3. STEEL ANGLE SUPPORT FOR REMOTE METER READING REGISTER SHALL BE LOCATED BELOW THE HINGED COVER FOR CLEAR ACCESS TO THE METER. EXACT LOCATION TO BE DETERMINED BY CONTRACTOR IN THE FIELD.

STANDARD METER VAULT INSTALLATION

CITY OF MONTEREY PARK
PUBLIC WORKS DEPARTMENT - WATER DIVISION

STANDARD NO.

W-203

BY	DATE
RAWN	10/02/24
REVISD	10/02/24
CHANGED	XX/XX/XX

APPROVED
WATER UTILITY MANAGER

APPROVED
CITY ENGINEER

[Signature] DATE 12/10/24
[Signature] DATE 12/11/24

SHEET 3 OF 3