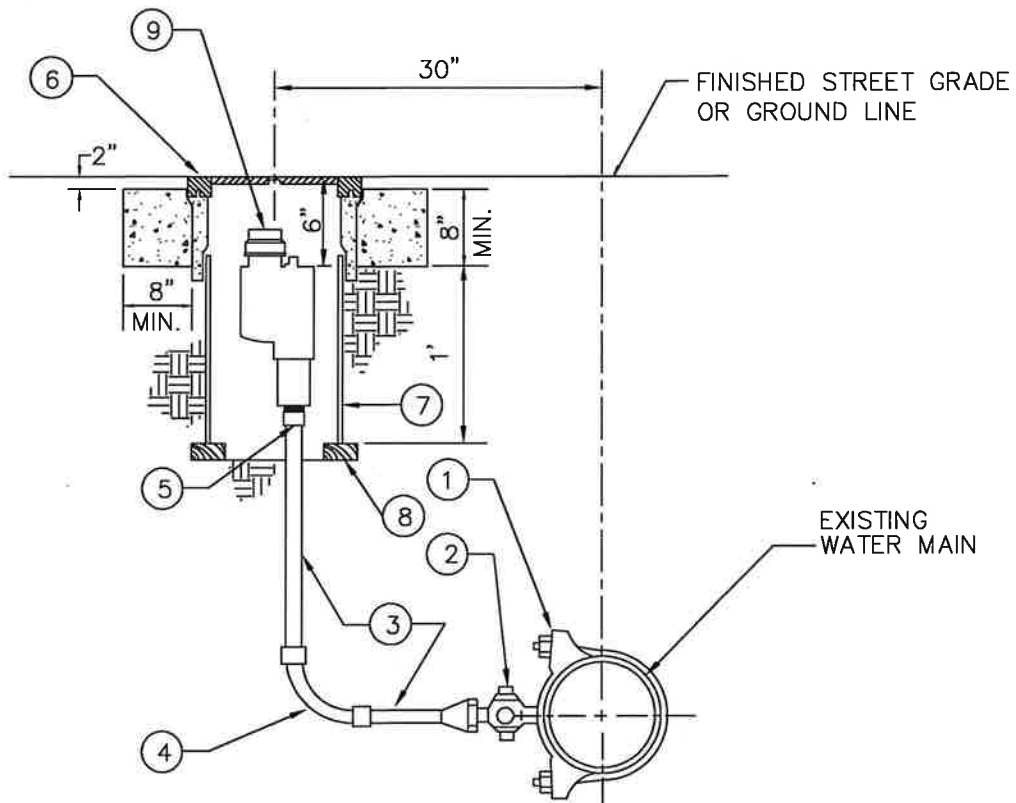


LIST OF MATERIAL

ITEM	DESCRIPTION	FORD	JONES	MUELLER	A.Y. MCDONALD
1	DOUBLE STRAP SERVICE SADDLE W/ CC (AWWA) THREAD	202B	J-979	BR2B SERIES	3825
1a	DOUBLE STRAP SERVICE SADDLE W/ CC (AWWA) THREAD PVC C900 & C909	202BS	J-969	BR2S SERIES	3855
2	CORPORATION STOP 2", KEY UP W/ CC (AWWA) THREAD (INSULATED)	-	E-1999SG	N-35008N	-
2a	CORPORATION STOP 2", KEY UP W/ CC (AWWA) THREAD (REGULAR)	FB1000-7-G-NL	E-1937	P-25008N	74701B-22
3	2" COPPER TUBE, TYPE K				
4	SHORT RADIUS ELL, COMPRESSION TYPE				
5	COUPLING, COMPRESSION X FIP				
6	BROOKS 4TT BOX				
7	8" DIA PVC PIPE, C900 LENGTH AS REQUIRED				
8	2" X 4" X 8" REDWOOD, 2 PLACES				
9	BLOW-OFF VALVE, BRASS, 2", TRUFLO MODEL TF550 BY THE KUPFERLE FOUNDRY CO.				



NOTES:

1. TAPS SHALL BE MADE AT LEAST 24" FROM ANY OTHER TAP, COUPLING, OR END OF MAIN.

2" BLOWOFF ASSEMBLY - TRAFFIC BEARING

CITY OF MONTEREY PARK

PUBLIC WORKS DEPARTMENT - WATER DIVISION

STANDARD NO.

W-122

	BY	DATE
DRAWN	AM	10/02/24
REVISED	DZ	10/02/24
CHANGED	XX	XX/XX/XX

APPROVED
WATER UTILITY MANAGER

[Signature]

DATE

12/10/24

APPROVED
CITY ENGINEER

[Signature]

DATE

12/11/24

SHEET 1 OF 1