



What You Need To Know About

# EDIBLE FOOD RECOVERY/ DONATION REQUIREMENTS

To address food insecurity and to reduce unnecessary food waste, California Senate Bill (SB) 1383 requires that by 2025, California will recover at least 20% of edible food that would have otherwise been sent to landfills. Penalties will be imposed for violations of the requirements.

## Who Must Comply and By When?

The law will be phased in, depending on the type of business, over the next two years. The first tier of large edible food generators is required to recover edible food for donation starting in January 2022. The second tier of large edible food generators is required to recover and donate starting in January 2024.

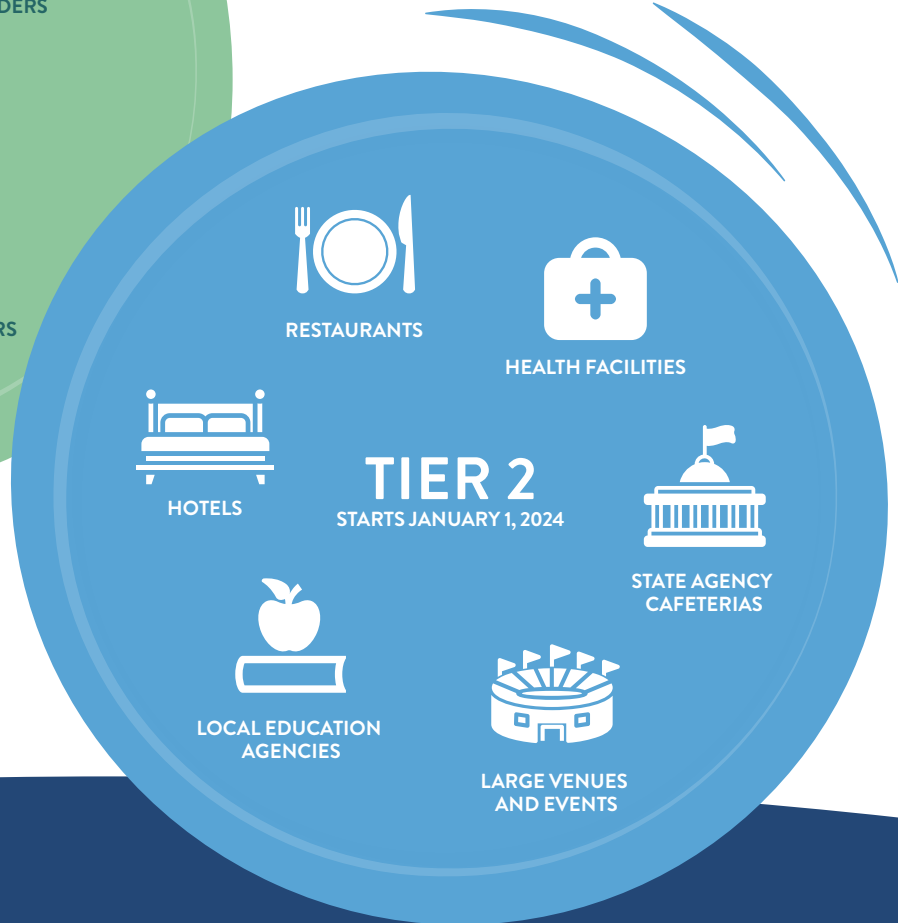
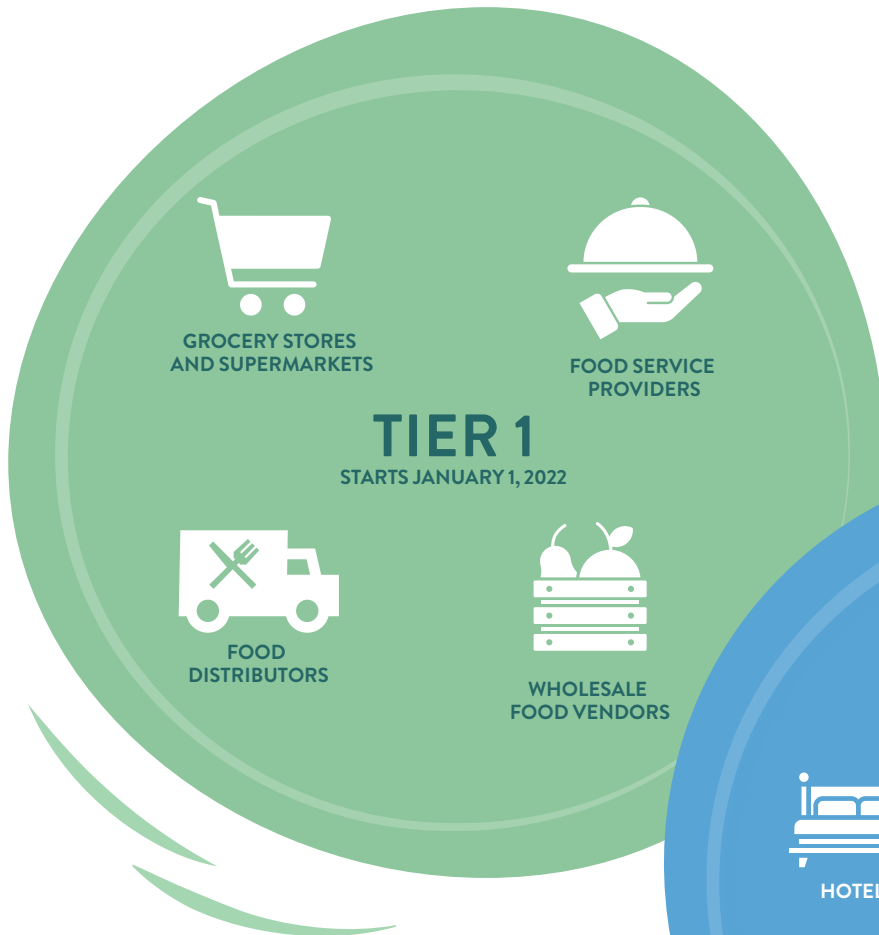
Mandated food donors can help their communities now by starting to work with local food banks, food pantries and other food recovery services. Through the San Gabriel Valley Council of Governments, businesses in each tier have access to technical assistance services for help in setting up a program.



# How Do I Comply?

1. Establish contracts or written agreements with food recovery organizations for edible food donation.
2. Maintain records of all food donation activities by using apps such as CARE  to help.
3. Donate\* all edible food that would otherwise be disposed. Preventing food loss before it happens is the safest, easiest and the most cost-effective method to minimize waste.

\*Know that your business is protected by both California's Good Samaritan Food Donation Act (AB 1219) and the Federal Good Samaritan Food Donation Act.



For more information, visit the Monterey Park city website or contact the Public Works Department at 626-307-1320.

## We Can Help You!

To learn more about SB 1383 and request no-cost technical assistance, to find downloadable food recovery agreements, food donation forms, educational signage, and information about upcoming inspection visits, and to get more information on the impact of the requirements on your business, please visit: [sgvcog.org/regional-food-recovery-program](https://sgvcog.org/regional-food-recovery-program)

*Businesses located in Alhambra, Azusa, Covina, Duarte, Glendora, Irwindale, La Cañada Flintridge, Monrovia, Monterey Park, Pomona, San Marino, South Pasadena, Temple City, and Walnut are eligible to receive no-cost technical assistance.*

