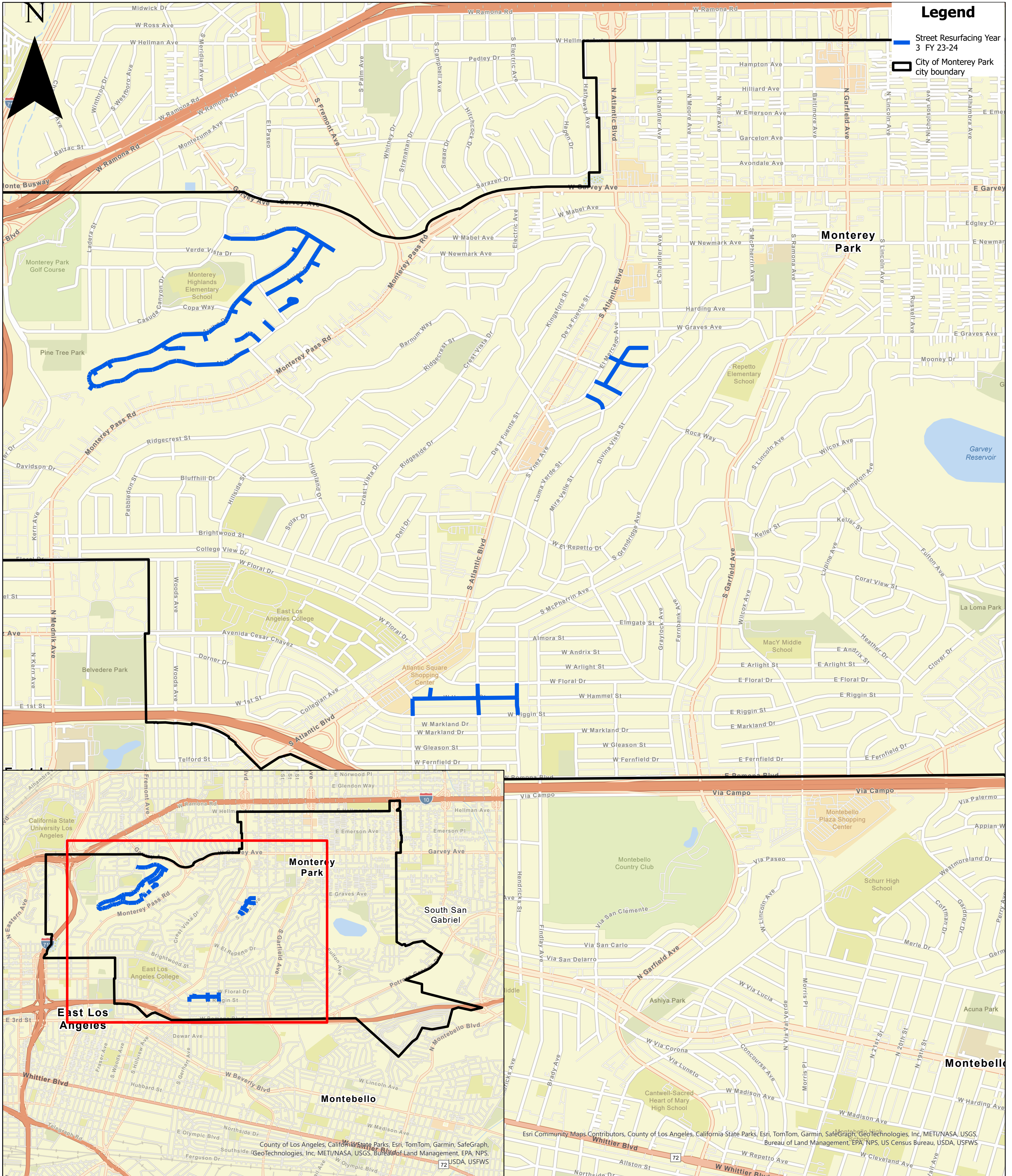


CITY OF MONTEREY PARK

2023-24 Street Rehabilitation



CIP NO. 96031



Legend

- Street Resurfacing Year 3 FY 23-24
- City of Monterey Park city boundary

0 1,500 3,000 6,000 Feet

Esri Community Maps Contributors, County of Los Angeles, California State Parks, Esri, TomTom, Garmin, SafeGraph, GeoTechnologies, Inc, METI/NASA, USGS, Bureau of Land Management, EPA, NPS, US Census Bureau, USDA, USFWS

Prepared by: Public Works-Engineering Division- GIS- 4/2/24