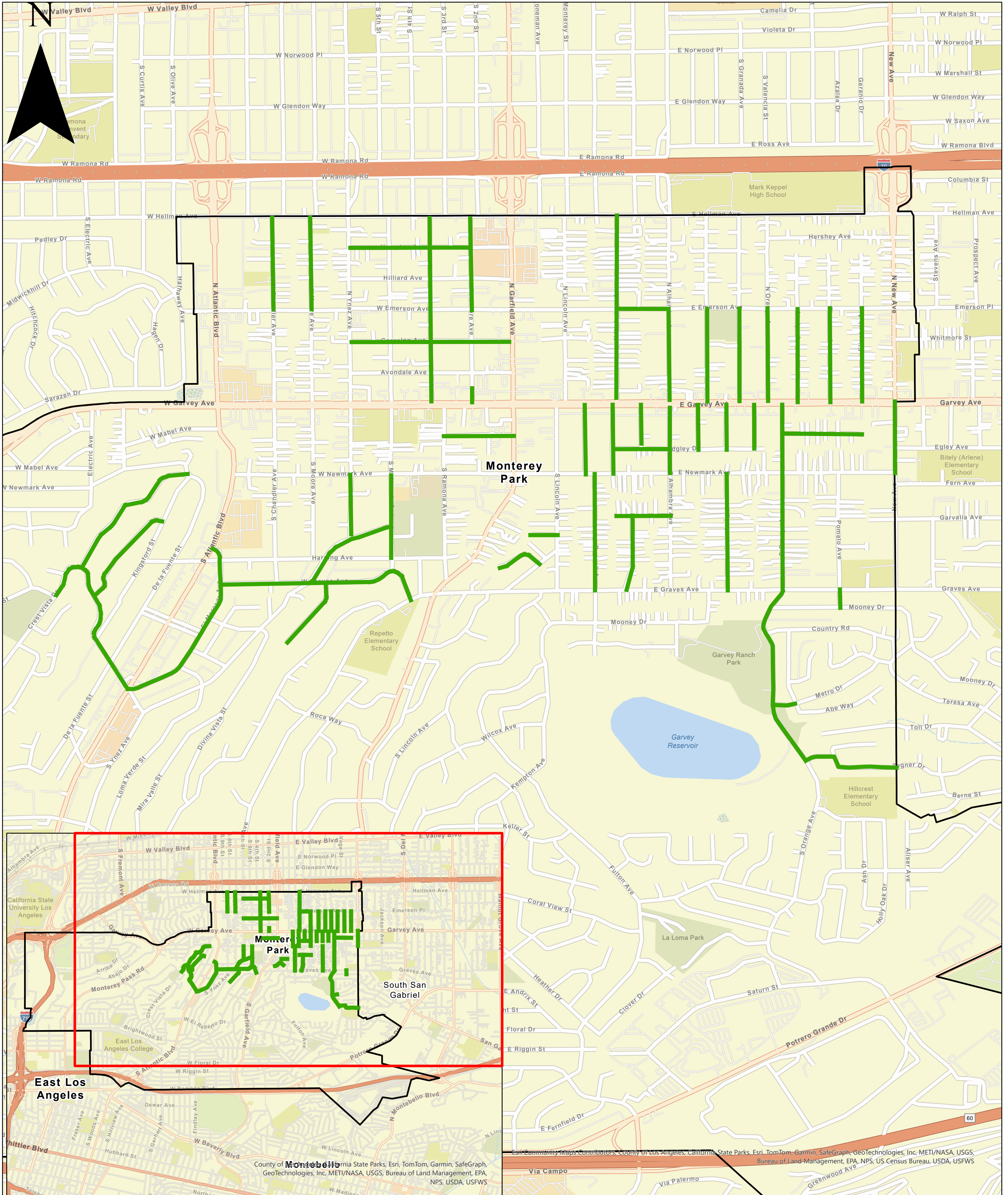


# City of Monterey Park 2022 Street Rehabilitation Project Locations



## CIP NO.96031



0 1,500 3,000 6,000 Feet

Prepared by: Public Works-Engineering Division-GIS-2/22/24

County of Monterey, California State Parks, Esri, TomTom, Garmin, SafeGraph, GeoTechnologies, Inc, METI/NASA, USGS, Bureau of Land Management, EPA, NPS, US Census Bureau, USDA, USFWS