



SUSTAINABILTY PLAN WORKSHOP



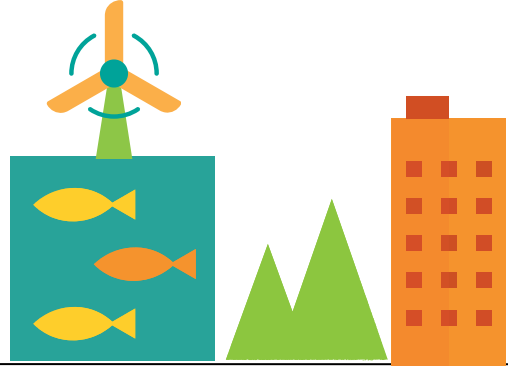
Feel free to raise your hand to ask questions or hold them until the end of the presentation.



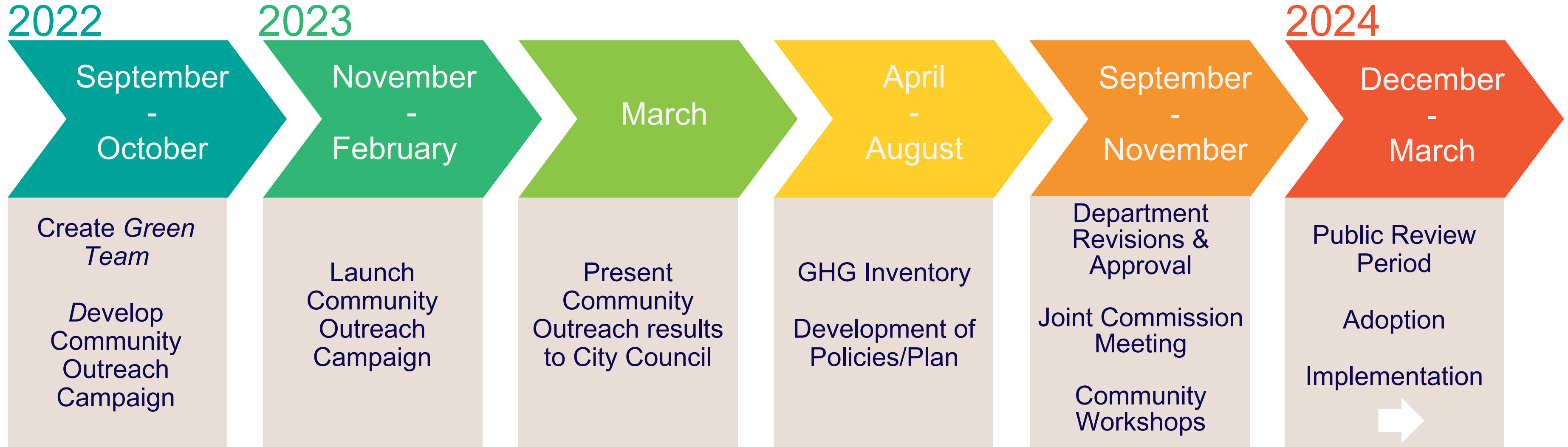
Agenda

- Timeline
- Plan Framework
- Community Input
- Emissions Inventory
- Strategies & Policies
- Activity Boards
- Q&A

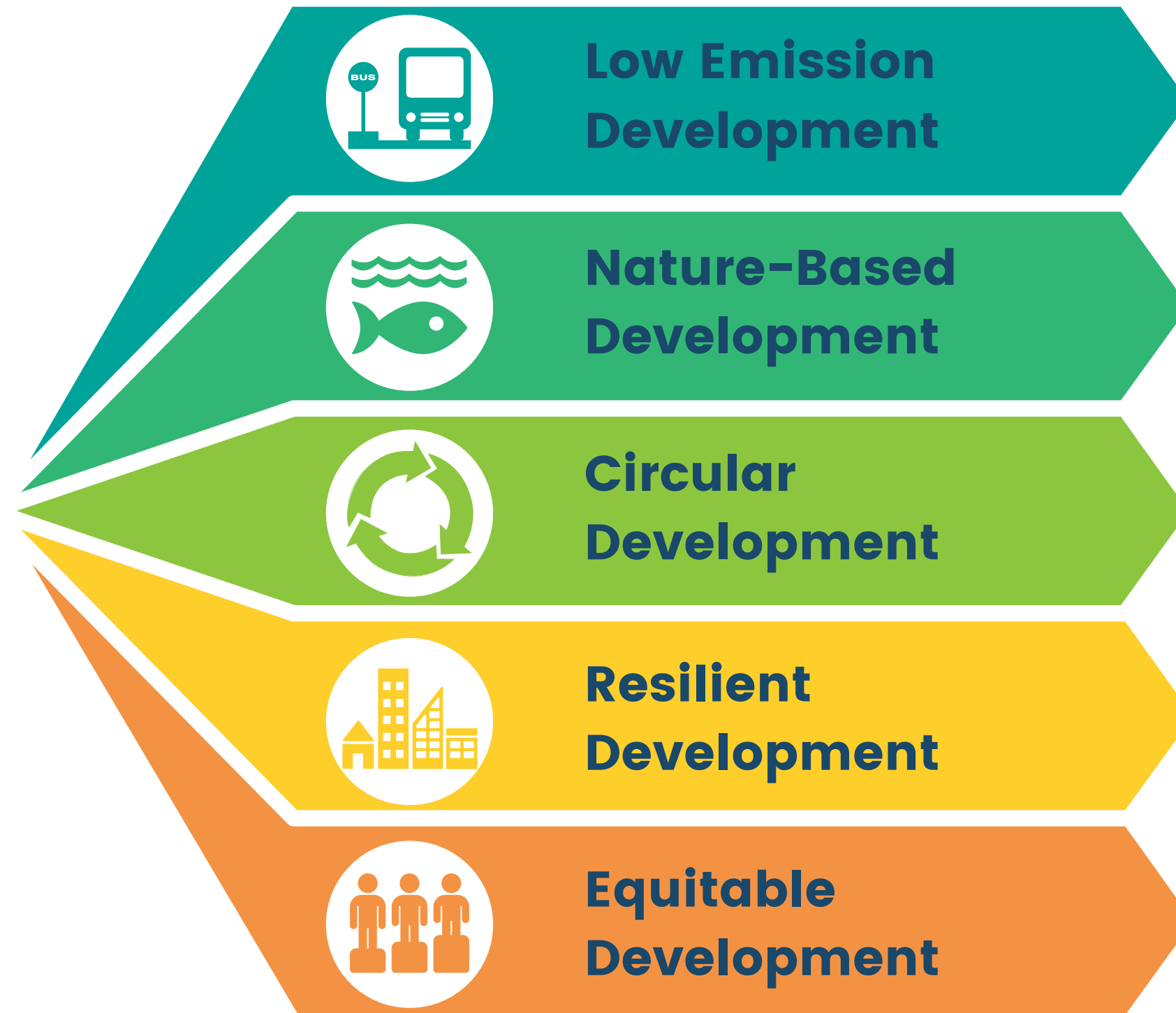




Timeline



Pathways to Sustainability



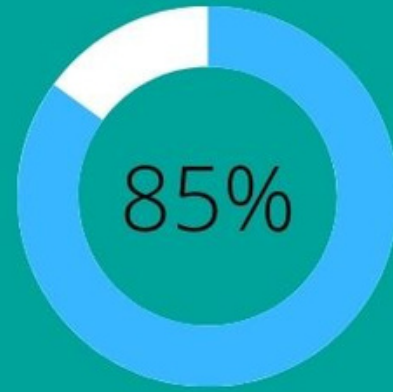
Community Input

543

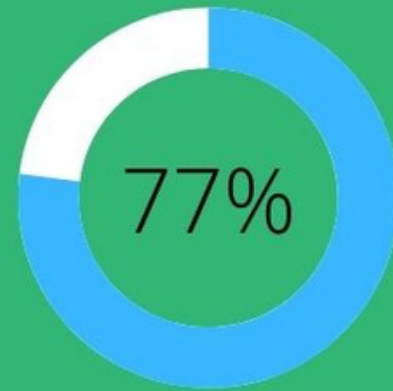
Survey Responses

194

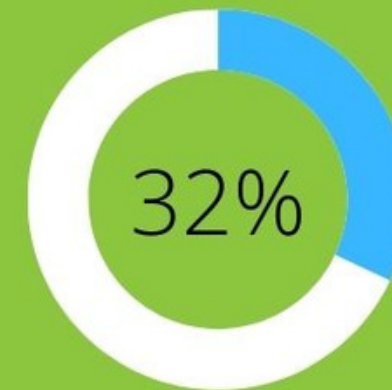
Written Comments



Believe the City needs to take action



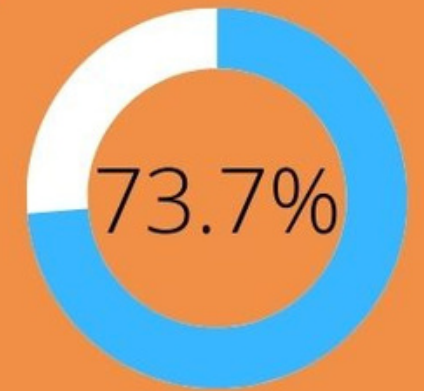
Know how to take action at home



Know about available programs



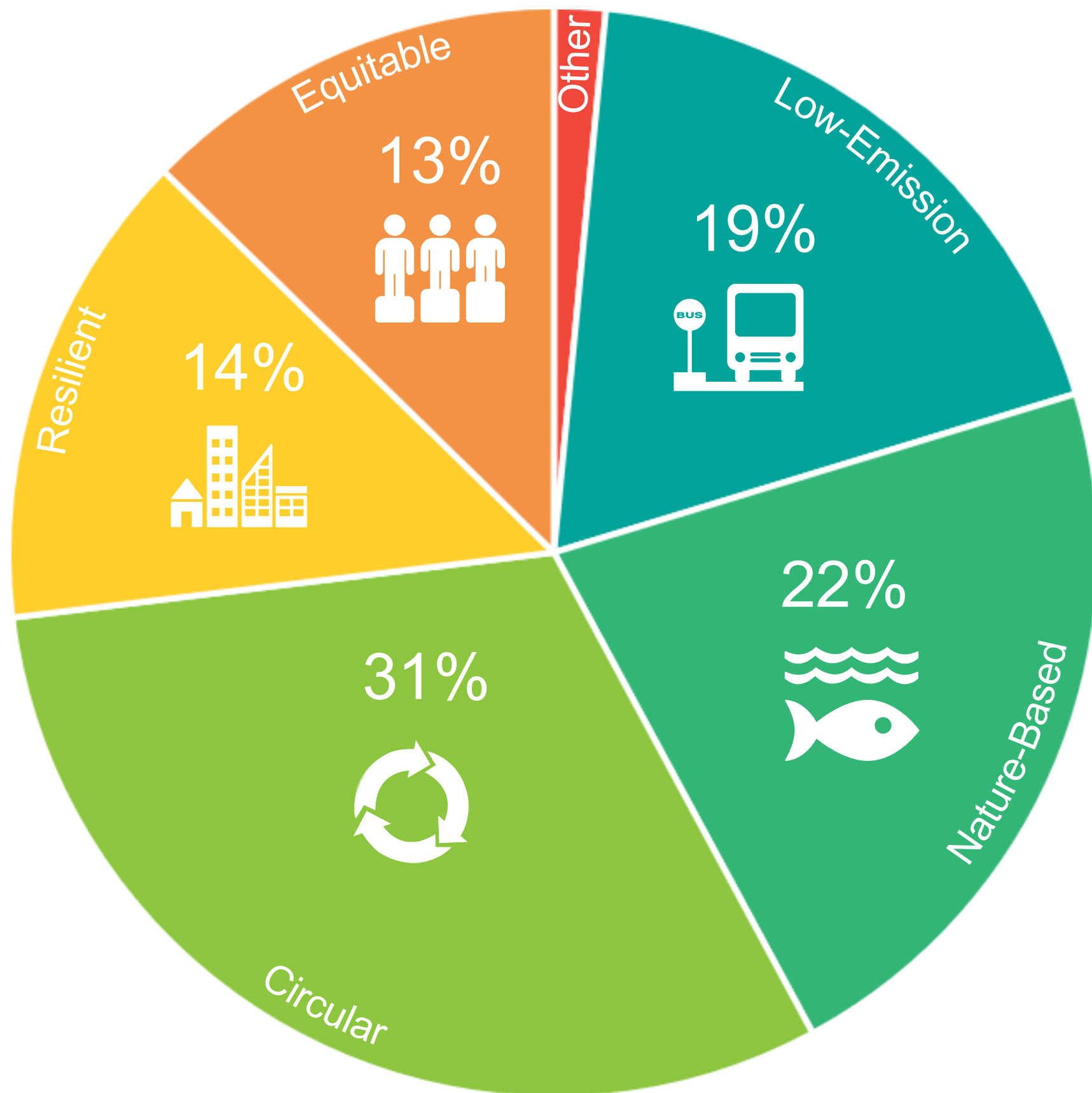
Are familiar with City Efforts



Want to learn about sustainable programs



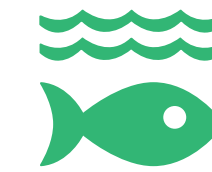
Community Input



Most Commonly Suggested Strategies Per Pathway



Recycling & Composting



Urban Greening



EVs & Alternative Transport

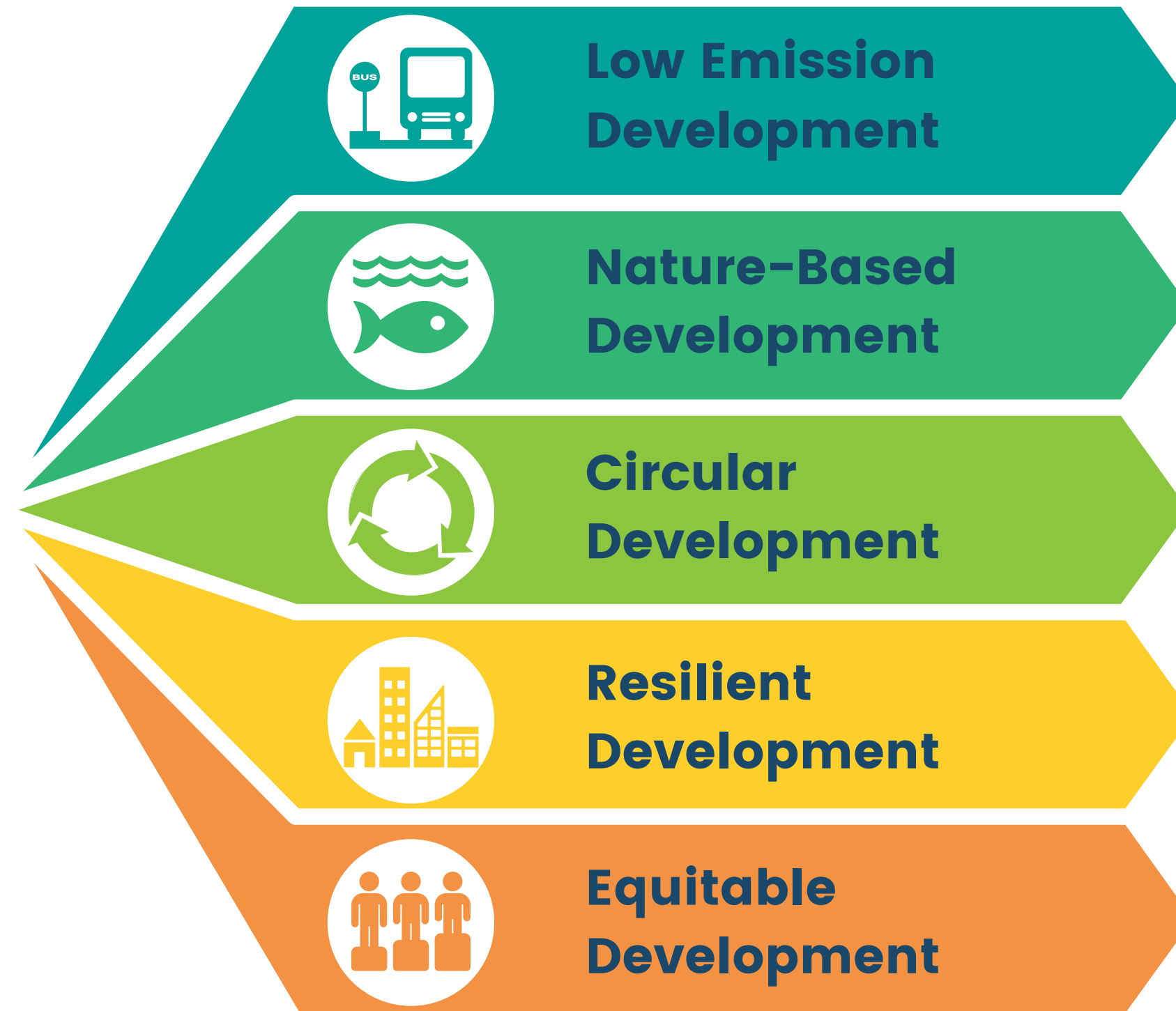


Incentives & Rebates



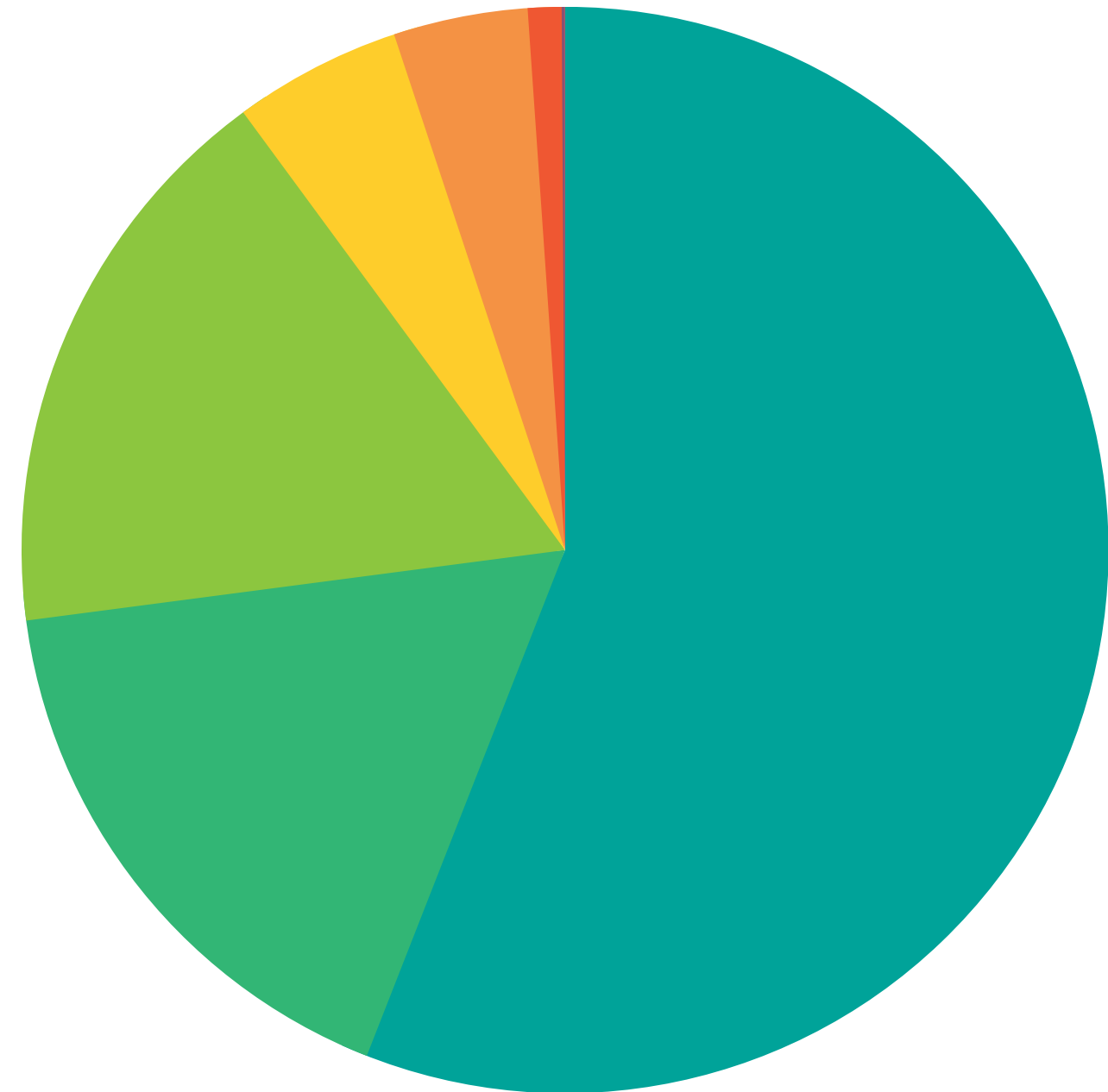
Community Workshops

Pathways to Sustainability

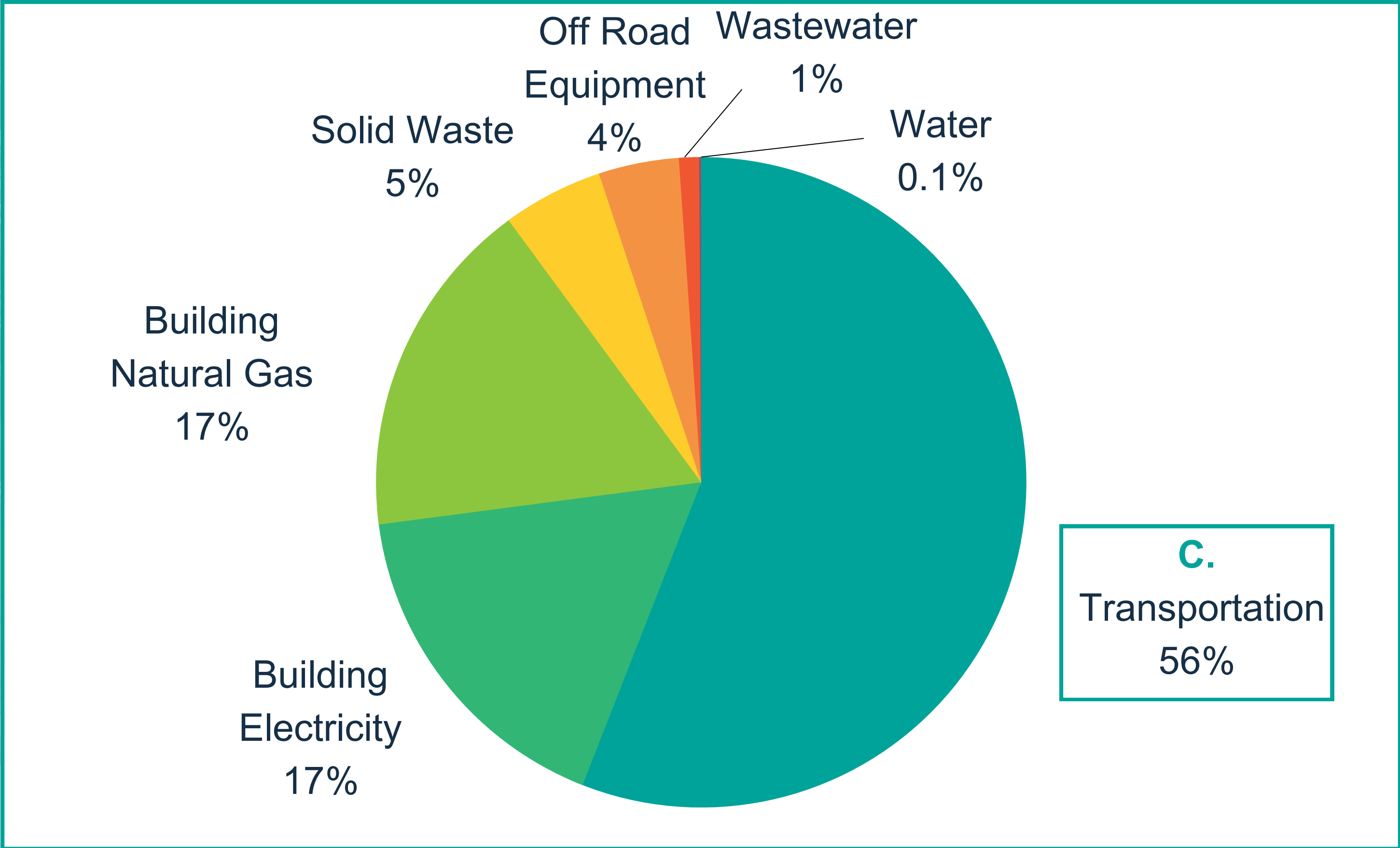


Quiz: Which sector generated the most emissions in MPK in 2021?

- A. Building Natural Gas
- B. Building Electricity
- C. Transportation
- D. Solid Waste

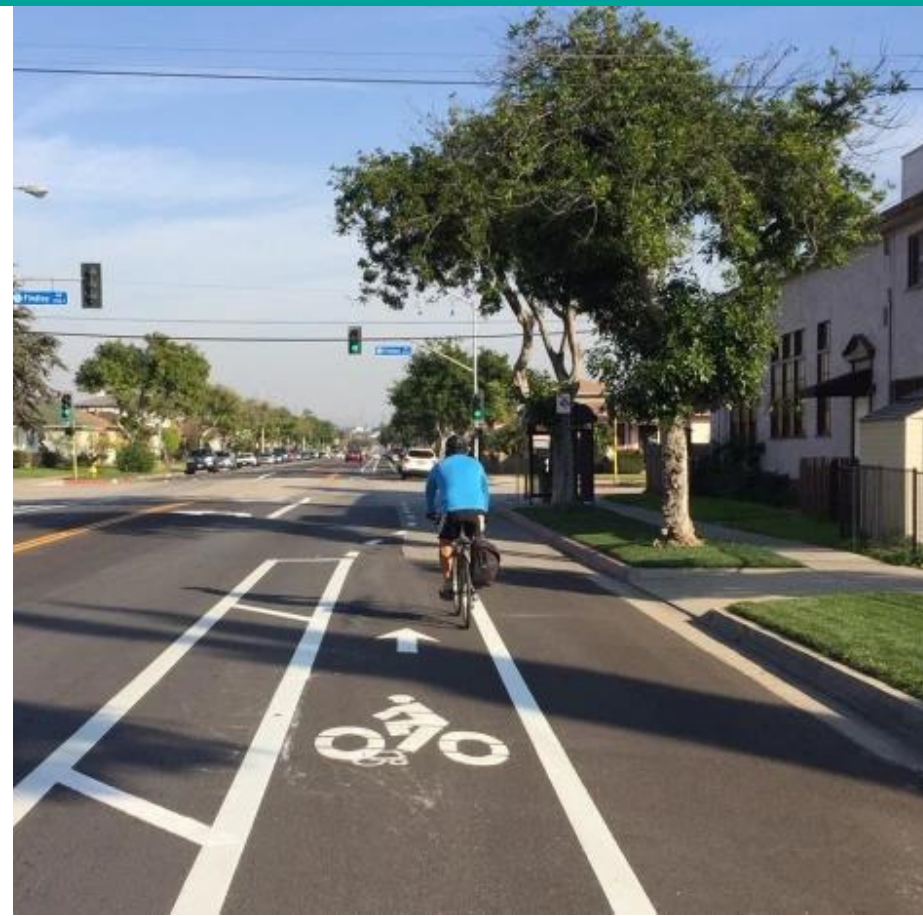
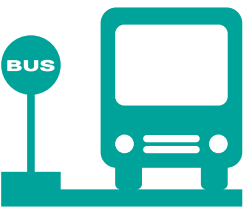


MPK Community Emissions by Sector 2021



C.
Transportation
56%

Low Emission Development Strategies

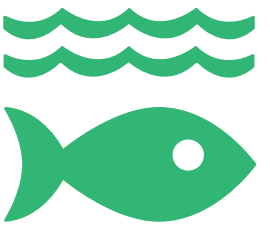


1. Reduce Vehicle Miles Traveled

2. Increase the Adoption of Zero Emission Vehicles (ZEVs)

3. Decarbonize Community and Municipal Building Energy

Nature Based Development Strategies



1. Increase Citywide
Water Conservation



2. Increase Citywide
Urban Greening

Circular Development Strategies



1. Reduce Landfill Waste

2. Promote Reduce, Reuse,
Repair, and Recovery



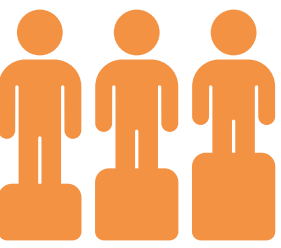
Resilient Development Strategies



**1. Increase Community
Extreme Heat Resilience**

**2. Climate Change
Preparedness**

Equitable Development Strategies



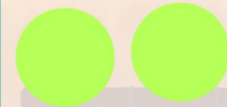
1. Foster Community Engagement
2. Equitably Distribute Costs and Benefits of Climate Action
3. Promote and Advance Equitable Spaces
4. Build a Strong, Connected Community

Low Emission Development

Which of the following strategies should the City prioritize to lower emissions?

Strategy L1: Reduce Passenger Car Use and Increase Active/Shared Transportation (e.g. walking, biking, Spirit Bus)

Example: Explore the implementation of public and shared transit programs to support increased public transit usage.



Strategy L2: Increase the Adoption of Zero Emission Vehicles (ZEVs)

Example: Expand ZEV infrastructure in Monterey Park (e.g. install more chargers)



Strategy L3: Decarbonize Community and Municipal Building Energy

Example: Explore the transition of City electricity consumption to renewable energy sources.



How can the City support you to reduce emissions at home?

Provide
information about
EV rebates

Home energy
efficiency
assessments





Q & A

We thank you for your
continued support in
our efforts to Go
Green!

Contact

Planning Division
Community Development Department
320 W Newmark Ave, Monterey Park, CA

(626) 307-1315

GoingGreen@montereypark.ca.gov
montereypark.ca.gov/GoingGreenMPK

