



SUSTAINABILTY PLAN WORKSHOP



Feel free to ask questions using the Q&A function or hold them until the end of the presentation.



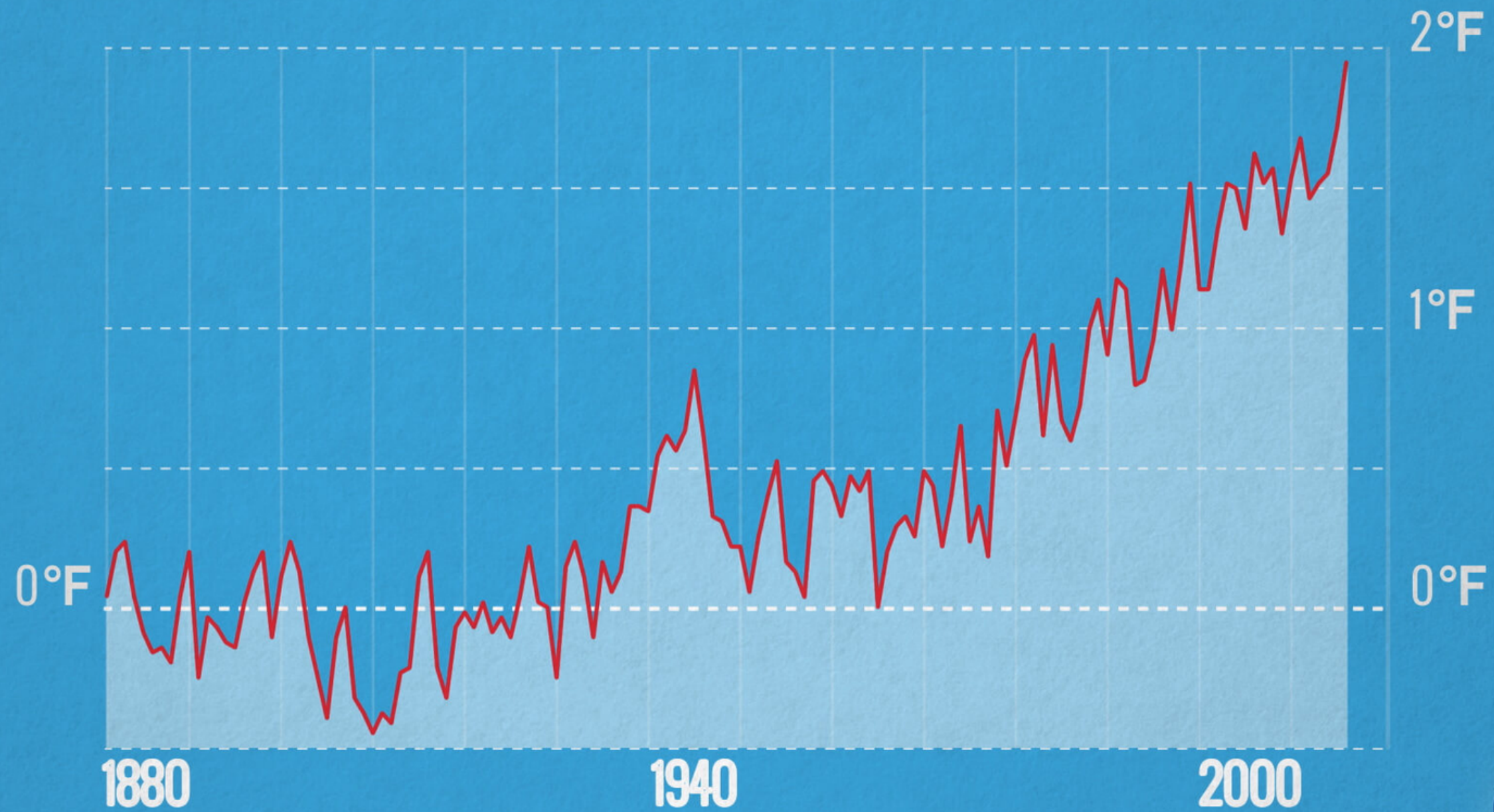
Agenda

- What is Climate Change?
- Timeline
- Plan Framework
- Community Input
- Emissions Inventory
- Strategies & Policies
- Q&A



What is Climate Change?

ANNUAL GLOBAL TEMPERATURE CHANGE



Graph of change in annual global temperatures, compared to the average of global annual temperatures from 1880-1899. Credit: NASA's Goddard Space Flight Center



The Greenhouse Effect

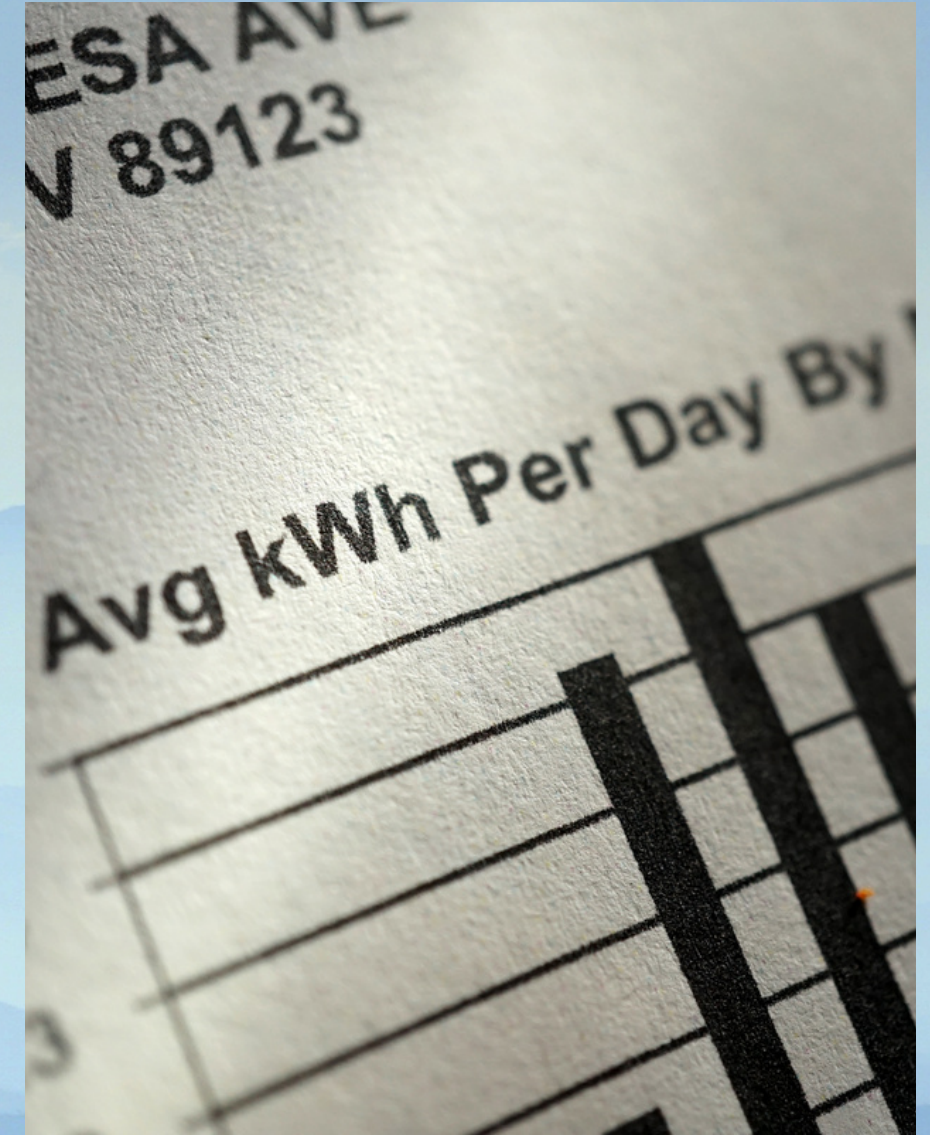


Atmosphere

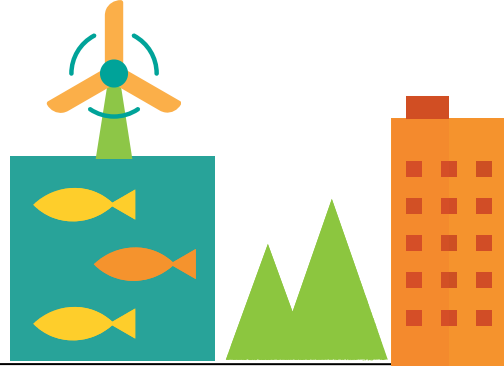
climate.nasa.gov

Climate Change = Weather Extremes

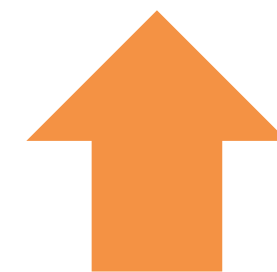
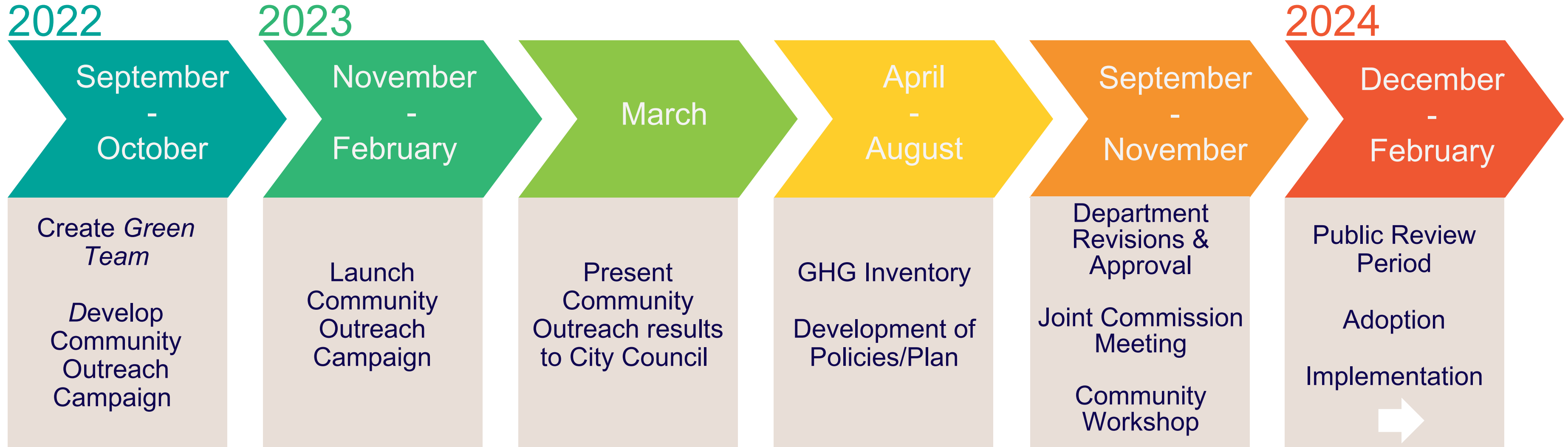
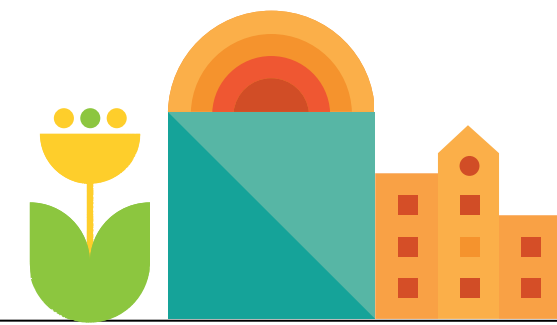




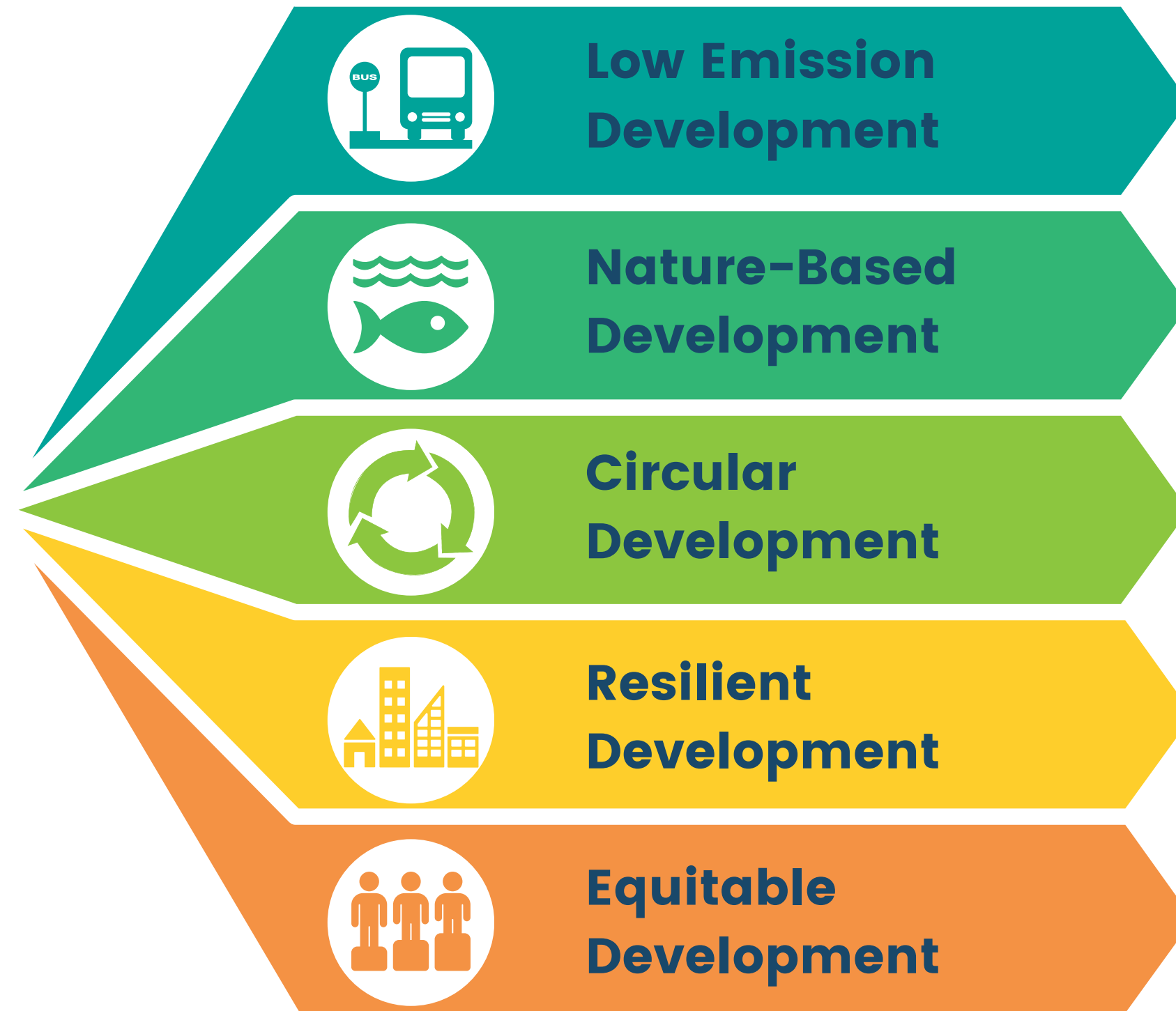
Climate change impacts our lives every day



Timeline



Pathways to Sustainability



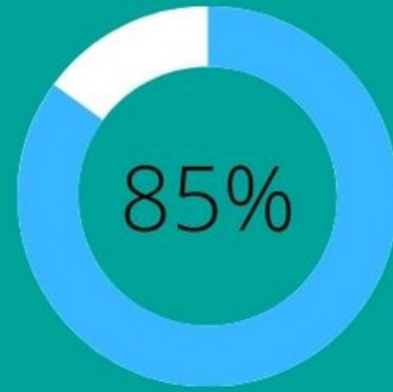
Community Input

543

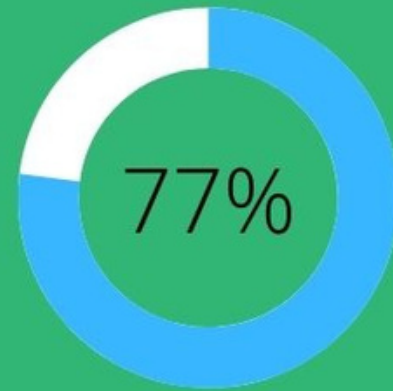
Survey Responses

194

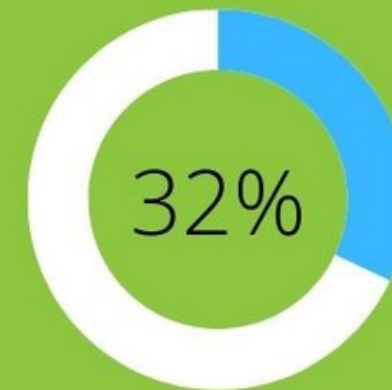
Written Comments



Believe the City needs to take action



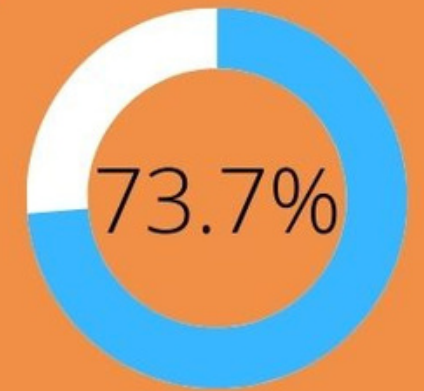
Know how to take action at home



Know about available programs



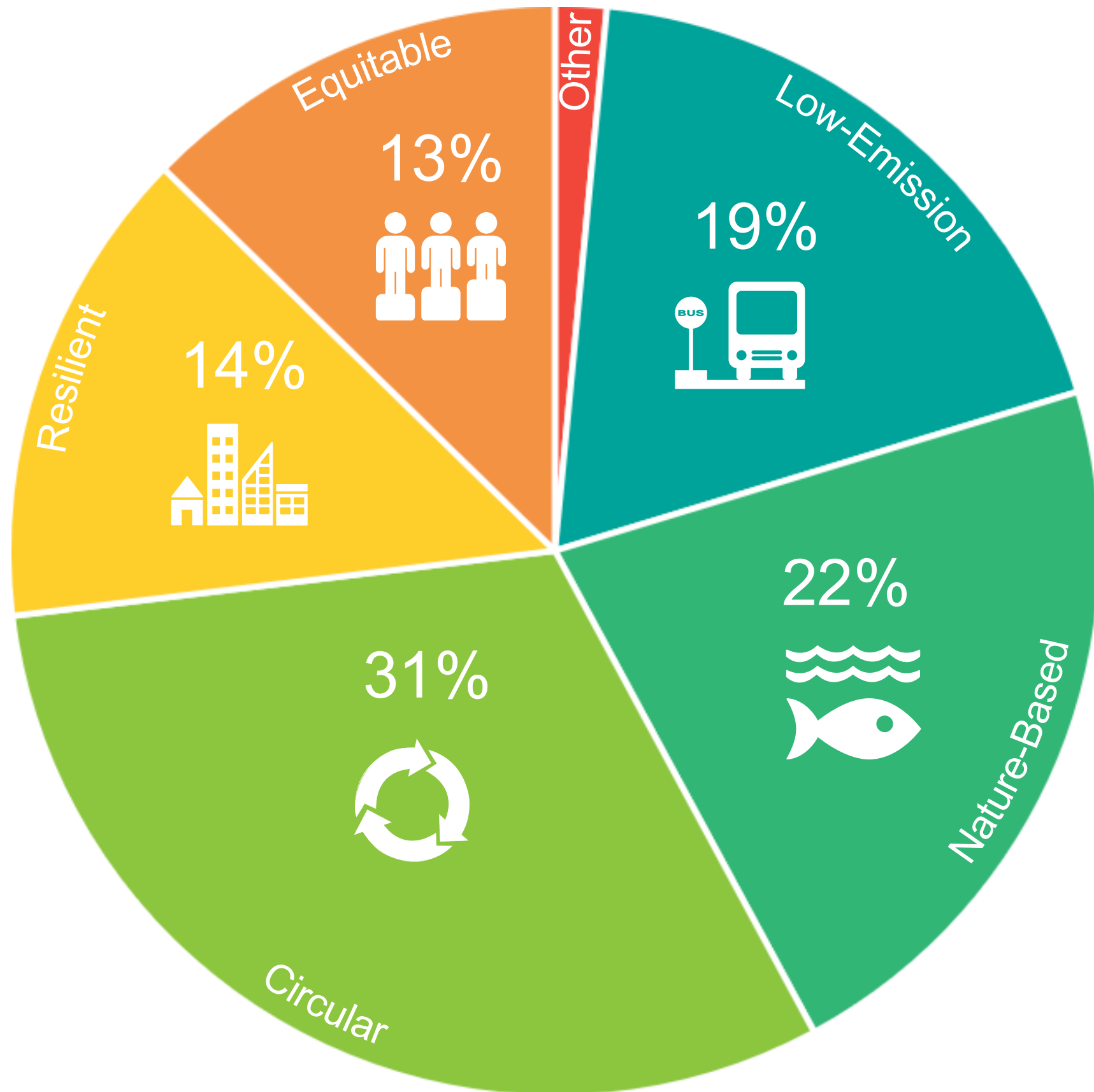
Are familiar with City Efforts



Want to learn about sustainable programs



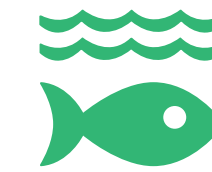
Community Input



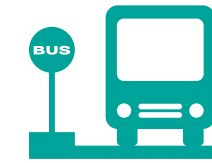
Most Commonly Suggested Strategies Per Pathway



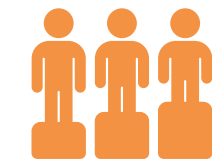
Recycling & Composting



Urban Greening



EVs & Alternative Transport

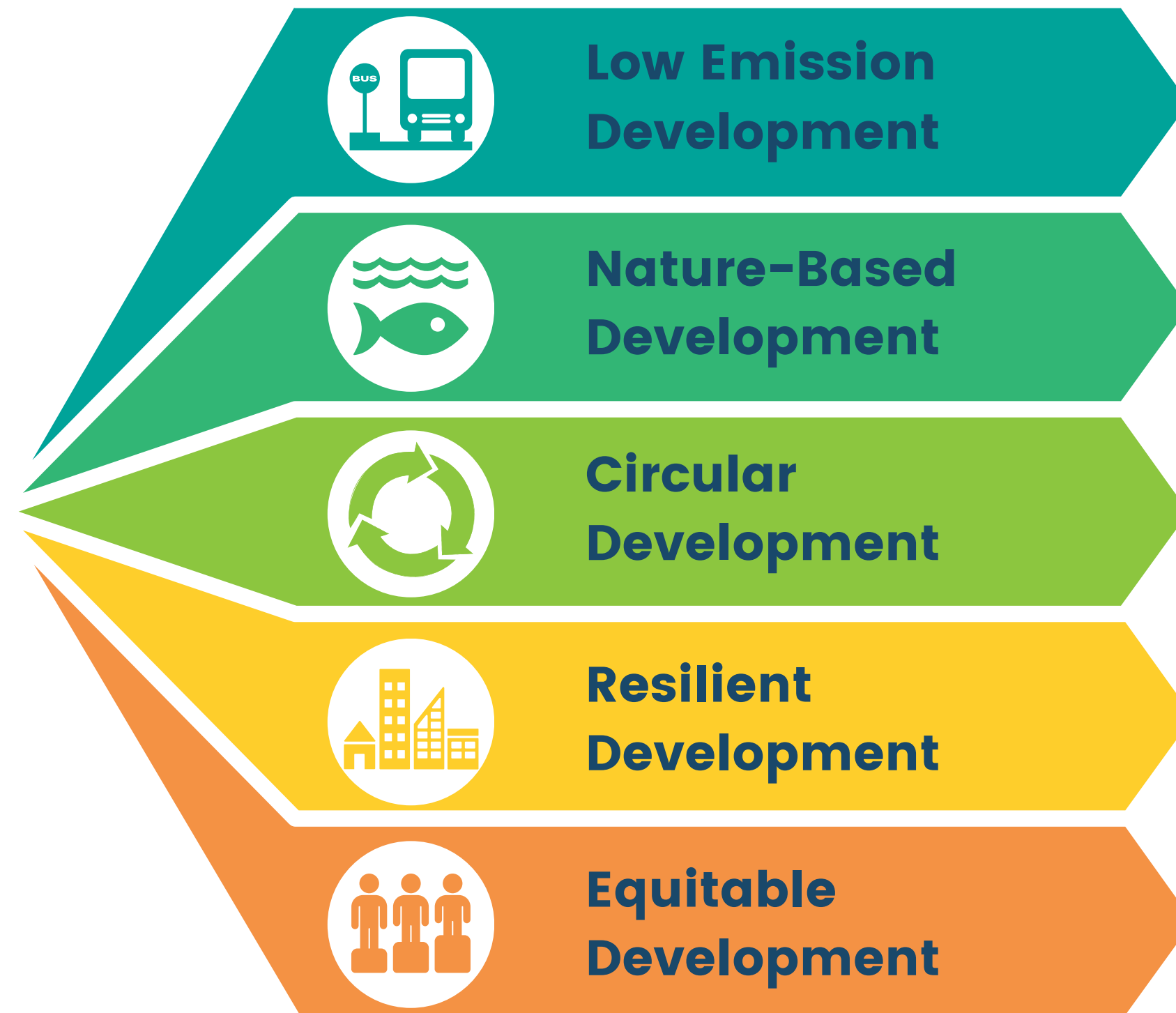


Incentives & Rebates



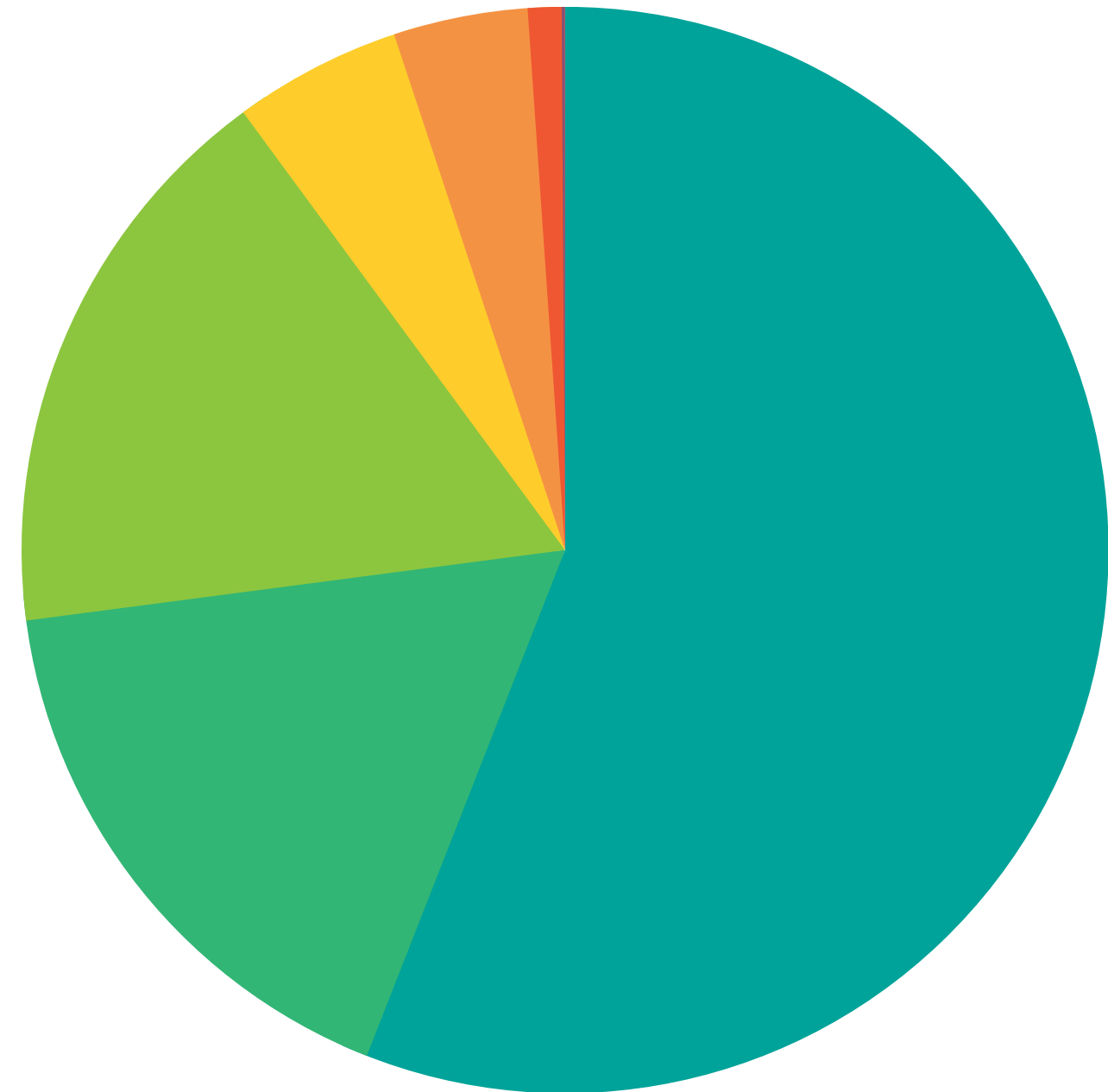
Community Workshops

Pathways to Sustainability

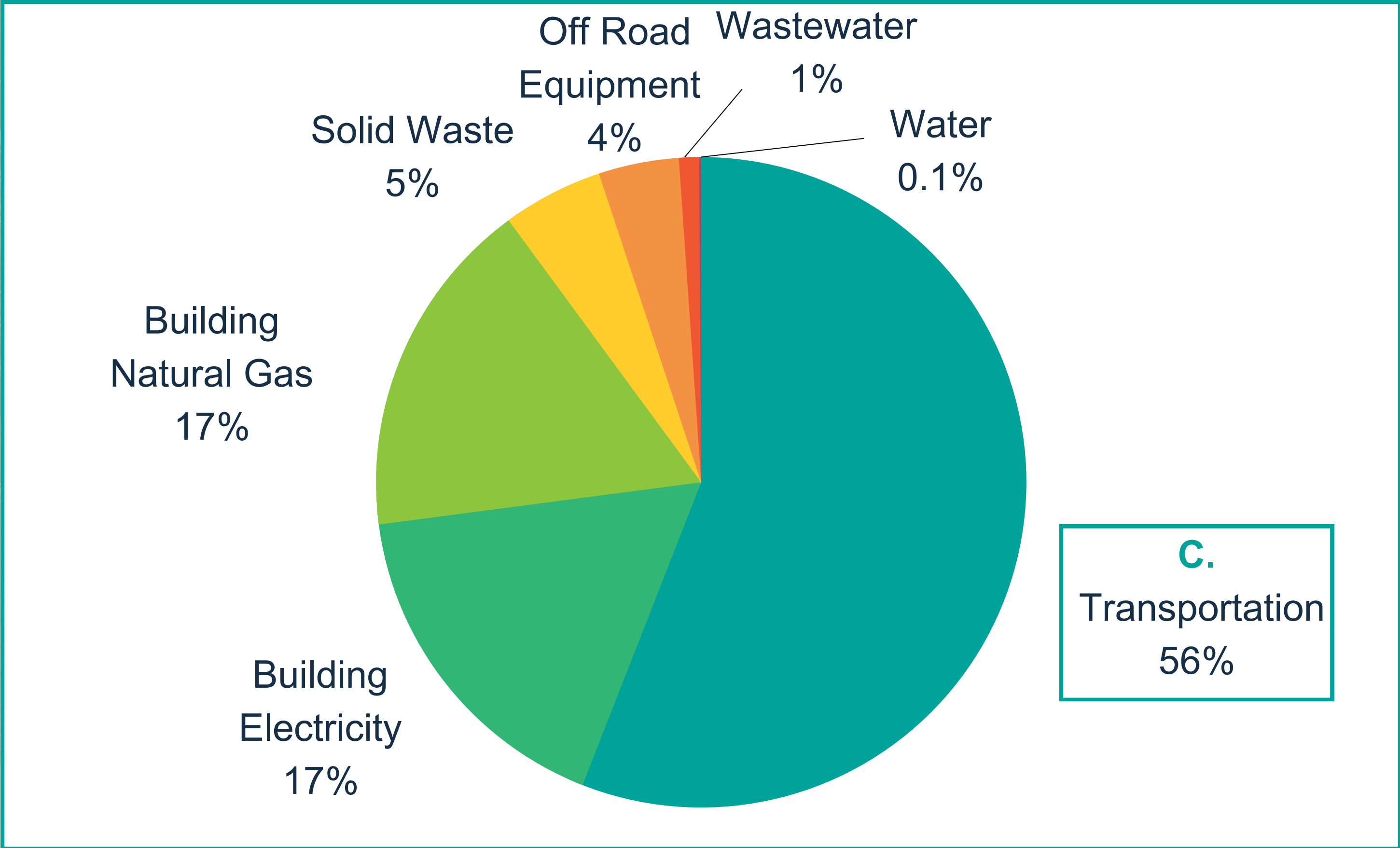


Quiz: Which sector generated the most emissions in MPK in 2021?

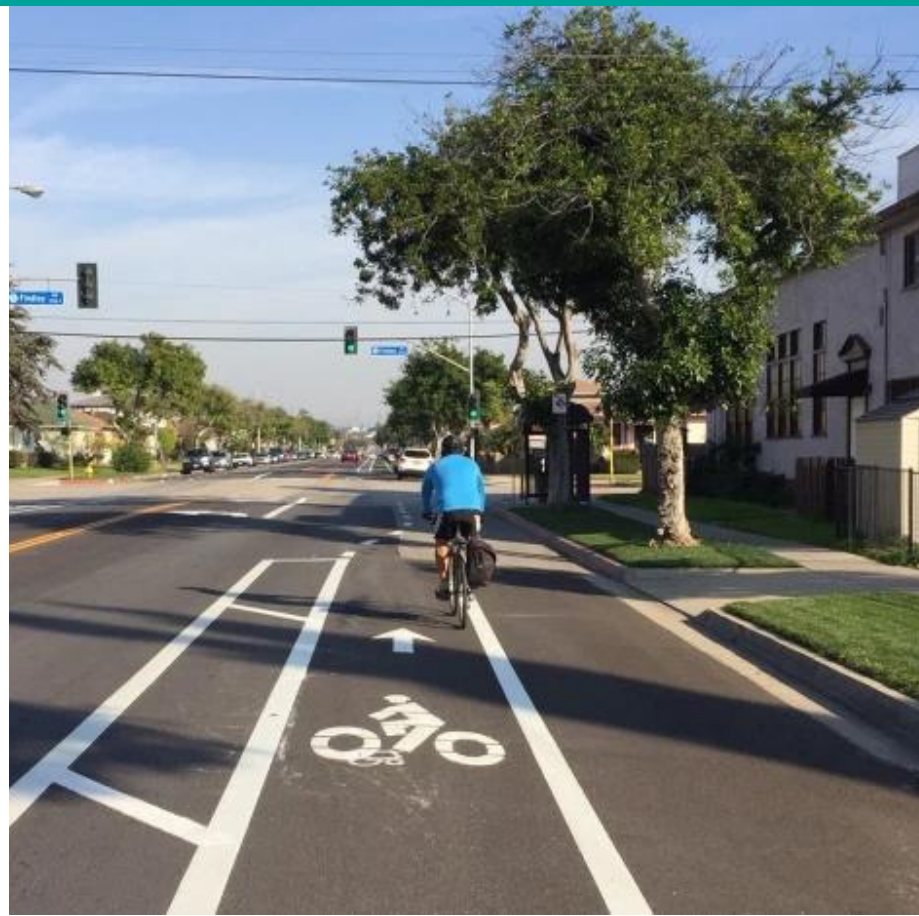
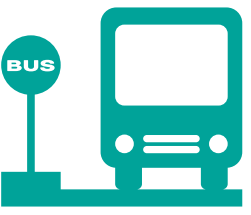
- A. Building Natural Gas
- B. Building Electricity
- C. Transportation
- D. Solid Waste



MPK Community Emissions by Sector 2021



Low Emission Development Strategies

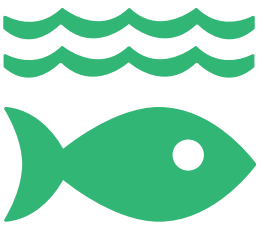


1. Reduce Vehicle Miles Traveled

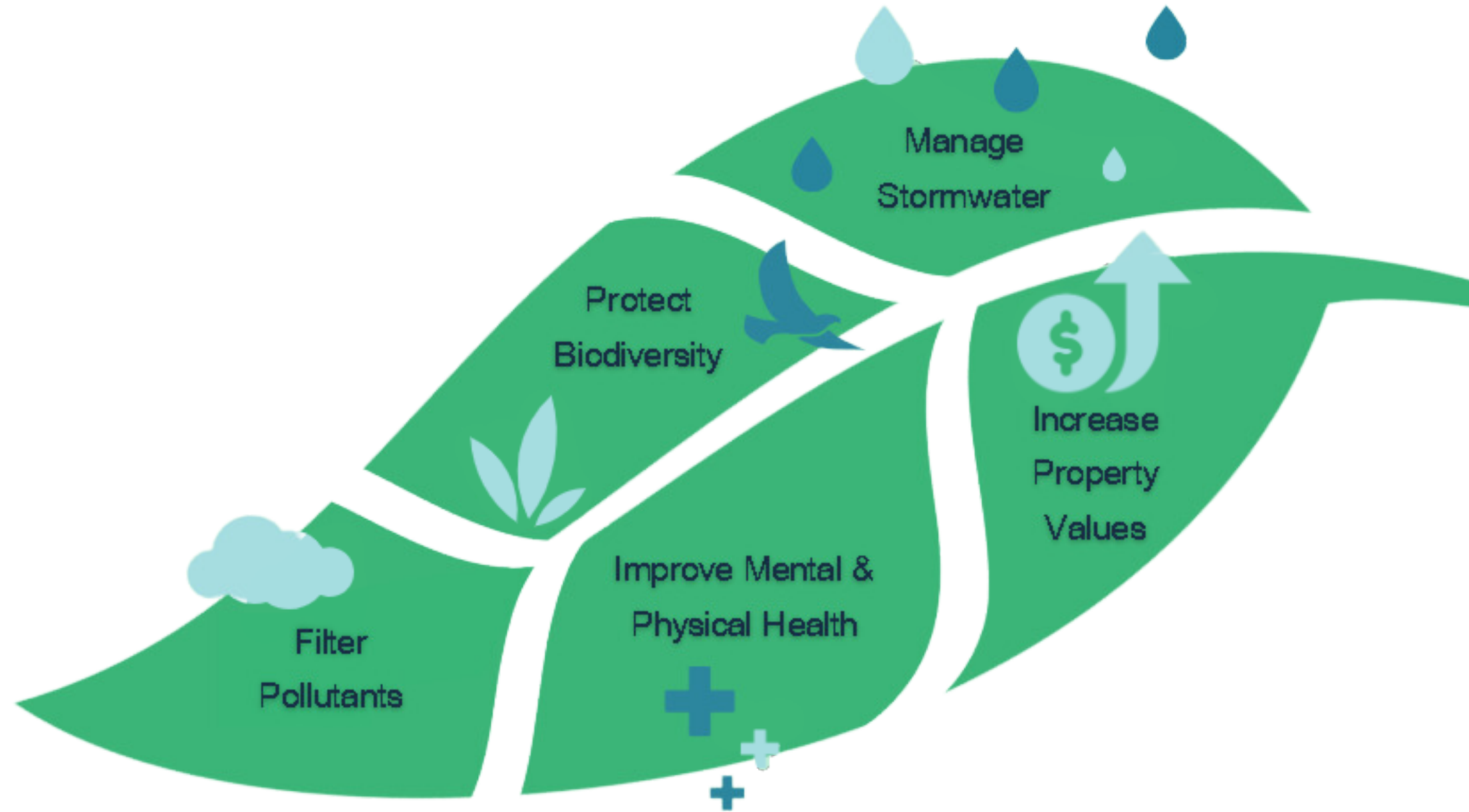
2. Increase the Adoption of Zero Emission Vehicles (ZEVs)

3. Decarbonize Community and Municipal Building Energy

Nature Based Development Strategies



1. Increase Citywide
Water Conservation



2. Increase Citywide
Urban Greening

Circular Development Strategies



1. Reduce Landfill Waste

2. Promote Reduce, Reuse, Repair, and Recovery



Circular Development



How can the City best support you to reduce waste at home?



- Provide a directory of repair shops in MPK.
- Coordinate workshops with repair professionals to learn how to fix household items.
- Host community based item-swapping events.
- Provide educational workshops on composting and reducing food waste.

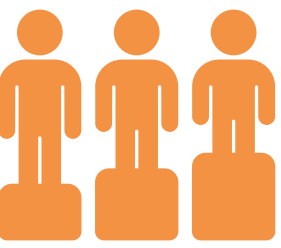
Resilient Development Strategies



**1. Increase Community
Extreme Heat Resilience**

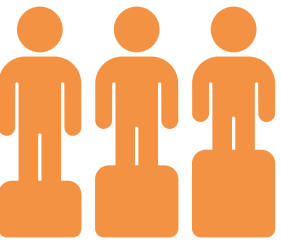
**2. Climate Change
Preparedness**

Equitable Development Strategies

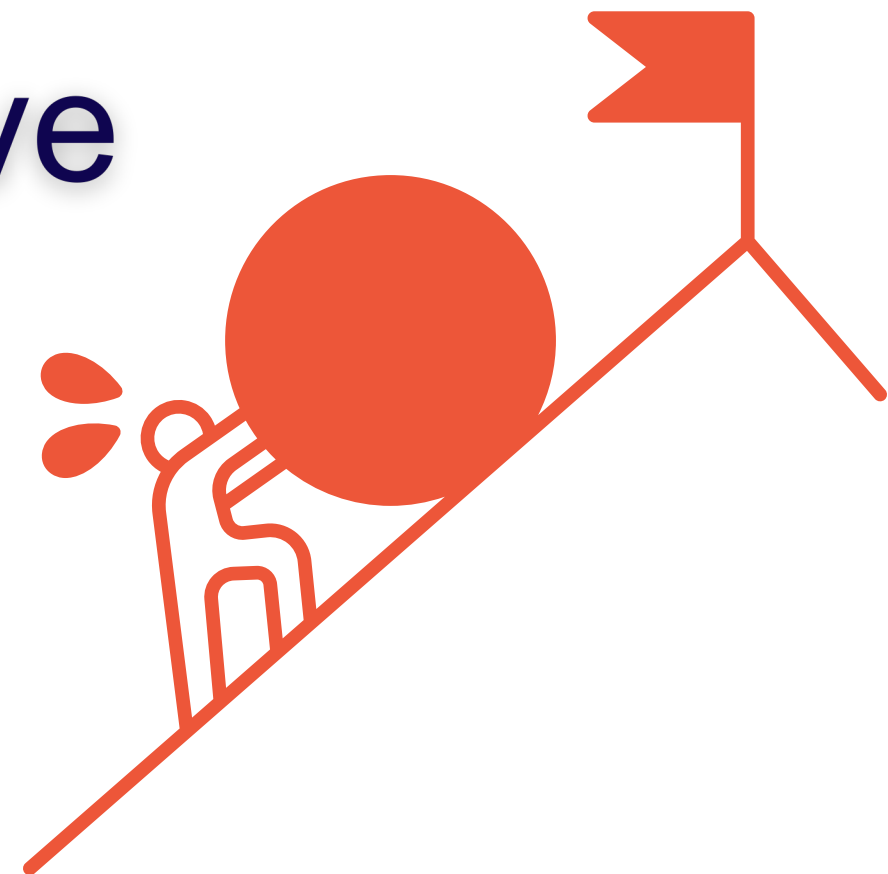


1. Foster Community Engagement
2. Equitably Distribute Costs and Benefits of Climate Action
3. Promote and Advance Equitable Spaces
4. Build a Strong, Connected Community

Equitable Development



In your opinion, what are the biggest challenges or barriers Monterey Park Community members face when trying to live more sustainably?



Community Workshop

Join us for an update on the Monterey Park Draft Sustainability Plan



Stay up to date
by visiting the
Going Green
Webpage

November 16, 2023 5pm

In Person: Robert Hill Lane
Elementary School Library
1500 Cesar Chavez Ave,
Monterey Park, CA 91754



Q & A

We thank you for your
continued support in
our efforts to Go
Green!

Contact

Planning Division
Community Development Department
320 W Newmark Ave, Monterey Park, CA

(626) 307-1315

GoingGreen@montereypark.ca.gov
montereypark.ca.gov/GoingGreenMPK

